

# Softcare Corporation

Activex for Healthcare

ANSIX Activex Control Version 1.0b  
for Ansi X12 837 Version 4010

*All Rights Reserved  
Patients Pending*

[support@caresel.com](mailto:support@caresel.com)  
[www.caresel.com](http://www.caresel.com)  
770.229.5289

## Softcare Corporation Ansix ocx for Ansi electronic Insurance claims.

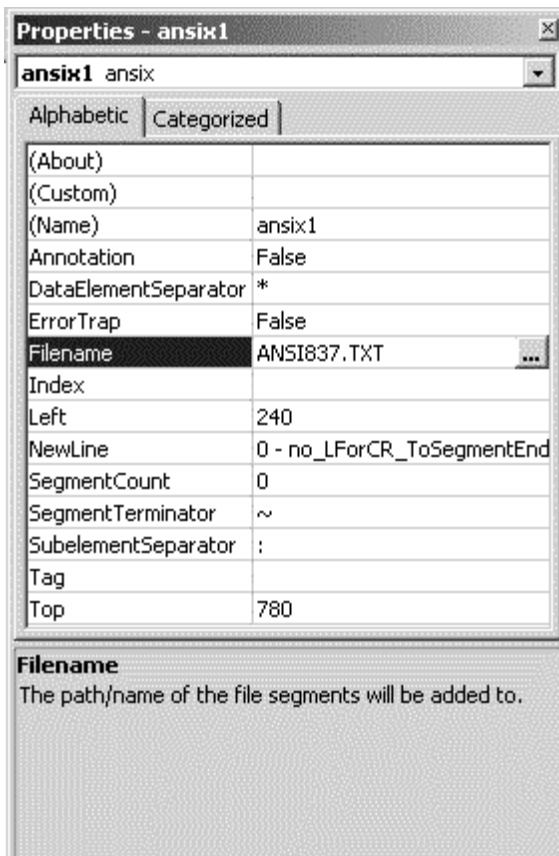
If you have just glanced at the Washington Publishing's **National Electronic Data Interchange Transaction Set Implementation Guide, Health Care Claim:Professional 837 ASC X12N 837 (004010X098) May 2000**, you know just by the title that chaos lies within. That's an under-statement if you have ever tried to read it and gain the knowledge necessary to write your procedures. If you have tried you know that you must write a little refer back to the guide, write a little more, refer back to the guide, write a little more and run screaming madly through your office.

Well it's a little better now. Introducing ANSIX an activex control (ocx) to help you write the ANSI X12 837 version 4010 electronic claims file. If you are familiar with NSFx then you will have the heads up on ANSIX..

To get an appreciation for ANSIX you must use it so a try and buy beta is available for download. You must register as usual and we will email the URL to your valid email address. Please be aware that you must provide a valid mailing address, telephone and company name otherwise you will not receive the try and buy beta email.

To download click here [http://www.caresel.com/private/user\\_register.asp](http://www.caresel.com/private/user_register.asp)

To get ready to write a ANSI X12 837 version 4010 file using ANSIX you should



first download a copy of the Implementation Guide from the Washington Publishing Company 1.800.972.4334 <http://www.wpc-edi.com>. Download the Professional 837 Claim PDF file it is free.

Once you have downloaded the guide you should look at page 51 to 57. This is the complete Healthcare Claim: Professional. Using these pages, ANSIX, and any Companion Guide available for carrier specific information will make writing the file much easier.

Most of the segment members (elements) code values are contained within ANSIX, however, the usage and complete **Description** of a segment is contained within the Implementation Guide.

ANSIX contains two types of properties. Loop properties, that are visible only in the code window, whilst you write code, using the IntelliSense feature of the language such as Visual Basic 6 or Visual Studio.Net, and properties that appear in the property window and appear in the IntelliSense dropdown during coding.

### Properties that appear in the VB6 Property window:

#### Property Annotation as boolean

**Syntax:**

Object.Filename = [True, False]

**Description:**

Ansix will place with in the output file annotation.

#### Property DataElementSeparator as String

**Syntax:**

Object.DataElementSeparator = char(1)

**Description:**

This single character separates each segment element. This value defaults to "\*"

#### Property ErrorTrap Property as Boolean

True, Or False

**Syntax:**

Object.ErrorTrap = [True, False]

Part

**Description**

True

Disables all 'on error resume in the control'

False

Enables 'on error resume in the control'

**Remarks:**

This is a debug feature used by Softcare.

#### Property Filename String PathFilename

**Syntax:**

Object.Filename = [path/filename]

**Description:**

Name of file to write claims to. Must conform to the file system file specifications naming conventions.

#### Property NewLine

**Syntax:**

Object.Newline =     no\_LForCR\_ToSegmentEnd  
                           LfCr\_ToSegmentEnd = 2  
                           LF\_ToSegmentEnd = 1

**Description:**

Values determine if a linefeed (UNIX) or linefeed carriage return (DOS/Windows) or if file is contiguous. Value enums are:

### **Property SegmentCount as String**

**Syntax:**

Value& = Object.SegmentCount

**Description:**

Read only value that represents the number of segments added to the file. Available only at runtime.

### **Property SegmentTerminator as String**

**Syntax:**

Object.SegmentTerminator = char(1)

**Description:**

The end of each segment is terminated with this single character. This value defaults to "~".

### **Property SubelementSeparator as String**

**Syntax:**

Object.SubelementSeparator = char(1)

**Description:**

Each member element is separated with this single character. This value defaults to "."

## **Subs , Events and Functions**

### **Sub OpenFile([FilePath As String])**

**Description:**

Open the file prior to adding the first segment. Optional argument filename will open filename else Openfile uses the Filename property to open.

### **Sub CloseFile()**

**Description:**

Function to close the file once opened. File should be closed after all segments are added.

### **Function Date\_to\_CCYYMMDD(inDate As Date) As String**

**Description:**

Routine to convert a date variable to proper ansi syntax. See Implementation Guide.

### **Function StringToHex(Value As String) As String**

**Description:**

Routine to convert String to hex for storage into a code value loop segment member.

## Event BeforeAdd(SegmentValue As String, SegmentCount As Long, bCancel As Boolean)

### Description:

Fired before an Additem. Additem can be canceled.

## Sub OpenFile([FilePath As String])

### Description:

Open the file prior to adding the first segment. Optional argument filename will open filename else Openfile uses the Filename property.

## Loop Properties

### Syntax:

Property LoopID\_QUAL\_OCCURANCE\_ **Description** As L?\_??\_??

**Example:** Loop0\_ISA\_00\_InterchangeControlHeader

### Description:

There are over 200 loop properties. You should study page 51 to 57 of the Washington Publishing Company's Implementation Guide to see each loop. And the sample application. Some loops only occur with in a file such as the ISA others will loop as needed. See a Appendix A.1 for a complete list of Loop Properties and elements.

## Sub Additem

Syntax: LoopProperty.Additem

### Description:

Sub routine that is part of each Loop Property. Calling this sub will cause the segment to add itself to the file specified in filename or during OpenFile.

## Installing Softcare's ANSIX

After downloading and installing the self-extracting file, there will be sample program in the ANSIX folder associated with Program Files. Launch the program to see the sample coding.

## Use of With With End.

When using ANSIX control you should make use of the 'with / end with' statements. ANSIX uses long property names and long code value names. Loop properties, segment elements and code value names contain the information that makes it easy for you to code. Since the names are so long you must use the 'with / end with' structure or your language may return too long naming errors. Avoid this by using the 'with' structure.

## Learn the Loop Hierarchy

ANSIX expects you to know the 837-loop hierarchy, page 51 to 57 of the Implementation Guide is all you need to refer to. There is the envelope loop ISA GS... GE ISA which is described starting in appendix B.3. This is one of the most confusing things about the Implementation Guide. The actual file is started with ISA and ends with IEA, however, the fine folks who created this manual buried this at the end of the manual. Also the 837 uses the concept of loops however, they assign very cryptic ID numbers to the loops and don't even assign loops ID to the ISA GS or the ST loops that do exist, so I decided to assign Loop0 for the ISA/GS envelope and Loop1 for the ST/BHT/REF segments that do not have one assigned. (See page 51 of the implementation guide you will see what I am talking about). As you can see that the first loop is 1000. That starts after the first segments ST/BHT/REF that don't have a loop ID.

Anyway ANSIX code properties all start with Loop (something) since loops increment in value loops you will use first start first in the IntelliSense window.

### Step by Step

**Step 1** paste an ANSIX control on your form. Add a command button or menu item. Select the click event code window.

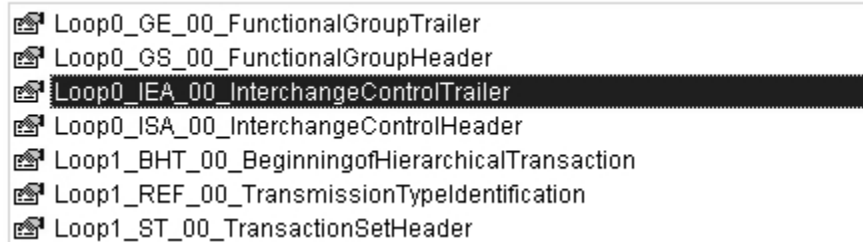
### Step 2 write your procedure using 'with ansix /end with coding structure'

With ansix1

```
Rem set the properties
.Annotation = False
.ErrorTrap = True
.FileName = "C:\ANSI837.TXT"
rem open the file
.OpenFile
.SegmentTerminator = "~"
.DataElementSeparator = "*"
.SubelementSeparator = ":"
.NewLine = no_LForCR_ToSegmentEnd
```

### Step 3 Add a loop

with .



**Step 4** Now choose your loop for this example it should be:

With .Loop0\_ISA\_00\_InterchangeControlHeader

**Step 5** Choose a segment element



**Step 6 Complete the segment**

```
With .Loop0_ISA_00_InterchangeControlHeader

.m01_AuthorizationInformationQualifier = val_00_NoAuthorizationInformationPresentinISA02
.m02_AuthorizationInformation = ""
.m03_SecurityInformationQualifier = "00"
.m04_SecurityInformation = ""
.m05_InterchangeIDQualifier = val_ZZ_MutuallyDefined
.m06_InterchangeSenderID = "SENDERID"
.m07_InterchangeIDQualifier = val_ZZ_MutuallyDefined
.m08_InterchangeReceiverID = "RECEIVERID"
.m09_InterchangeDate = ansixl.Date_to_CCYYMMDD(Now)
.m10_InterchangeTime = ""
.m11_InterchangeStandardsIdentifier = val_U_US_EDICommunityofASCX12TDCCandUCS
.m12_InterchangeControlVersionNumber = "00410"
.m13_InterchangeControlNumberMustMatchIEA02 = "001"
.m14_AcknowledgmentRequested = val_0_NotAcknowledgmentRequested
.m15_ProductionTestUsageIndicator = val_T_TestData
.m16_ComponentElementSeparator = ":"
.AddItem

End With
```

**Step 7 Complete other loops including GE and ISA****Step 8 Close the file**

```
.CloseFile
```

## Appendix A.1

### Property Loop1\_ST\_00\_TransactionSetHeader

#### Element Members

m01\_TransactionSetIdentifierCode = "" rem set a code value  
     val\_837\_HealthCareClaim\_143\_3  
 m02\_TransactionSetControlNumber = ""

### Property Loop1\_BHT\_00\_BeginningofHierarchicalTransaction

#### Element Members

m01\_HierarchicalStructureCode = "" rem set a code value  
     val\_0019\_InformationSourceSubscriberDependent\_1005\_7  
 m02\_TransactionSetPurposeCode = "" rem set a code value  
     val\_00\_Original\_353\_9  
     val\_18\_Reissue\_353\_9  
 m03\_OriginatorApplicationTransactionIdentifier = ""  
 m04\_TransactionSetCreationDate = ""  
 m05\_TransactionSetCreationTime = ""  
 m06\_ClaimorEncounterIdentifier = "" rem set a code value  
     val\_CH\_Chargeable\_640\_15  
     val\_RP\_Reporting\_640\_15

### Property Loop1\_REF\_00\_TransmissionTypeIdentification

#### Element Members

m01\_ReferencelIdentificationQualifier = "" rem set a code value  
     val\_87\_FunctionalCategory\_128\_19  
 m02\_TransmissionTypeCode = ""

### Property Loop1000A\_NM1\_00\_SubmitterName

#### Element Members

m01\_EntityIdentifierCode = "" rem set a code value  
     val\_41\_Submitter\_98\_25  
 m02\_EntityTypeQualifier = "" rem set a code value  
     val\_1\_Person\_1065\_27  
     val\_2\_NonPersonEntity\_1065\_27  
 m03\_SubmitterLastorOrganizationName = ""  
 m04\_SubmitterFirstName = ""  
 m05\_SubmitterMiddleName = ""  
 m08\_IdentificationCodeQualifier = "" rem set a code value  
     val\_46\_ElectronicTransmitterIdentificationNumberETIN\_66\_35  
 m09\_SubmitterIdentifier = ""

### Property Loop1000A\_N2\_00\_AdditionalSubmitterNameInformation

#### Element Members

m01\_AdditionalSubmitterName = ""

**Property Loop1000A\_PER\_00\_SubmitterEDIContactInformation****Element Members**

m01\_ContactFunctionCode = "" rem set a code value  
     val\_IC\_InformationContact\_366\_44  
 m02\_SubmitterContactName = ""  
 m03\_CommunicationNumberQualifier = "" rem set a code value  
     val\_ED\_ElectronicDataInterchangeAccessNumber\_365\_47  
     val\_EM\_ElectronicMail\_365\_47  
     val\_FX\_Facsimile\_365\_47  
     val\_TE\_Telephone\_365\_47  
 m04\_CommunicationNumber = ""  
 m05\_CommunicationNumberQualifier = "" rem set a code value  
     val\_ED\_ElectronicDataInterchangeAccessNumber\_365\_53  
     val\_EM\_ElectronicMail\_365\_53  
     val\_EX\_TelephoneExtension\_365\_53  
     val\_FX\_Facsimile\_365\_53  
     val\_TE\_Telephone\_365\_53  
 m06\_CommunicationNumber = ""  
 m07\_CommunicationNumberQualifier = "" rem set a code value  
     val\_ED\_ElectronicDataInterchangeAccessNumber\_365\_60  
     val\_EM\_ElectronicMail\_365\_60  
     val\_EX\_TelephoneExtension\_365\_60  
     val\_FX\_Facsimile\_365\_60  
     val\_TE\_Telephone\_365\_60  
 m08\_CommunicationNumber = ""

**Property Loop1000B\_NM1\_00\_ReceiverName****Element Members**

m01\_EntityIdentifierCode = "" rem set a code value  
     val\_40\_Receiver\_98\_69  
 m02\_EntityTypeQualifier = "" rem set a code value  
     val\_2\_NonPersonEntity\_1065\_71  
 m03\_ReceiverName = ""  
 m08\_IdentificationCodeQualifier = "" rem set a code value  
     val\_46\_ElectronicTransmitterIdentificationNumberETIN\_66\_78  
 m09\_ReceiverPrimaryIdentifier = ""

**Property Loop1000B\_N2\_00\_ReceiverAdditionalNameInformation****Element Members**

m01\_ReceiverAdditionalName = ""

**Property Loop2000A\_HL\_00\_BillingPaytoProviderHierarchicalLevel****Element Members**

m01\_HierarchicalIDNumber = ""  
 m03\_HierarchicalLevelCode = "" rem set a code value  
     val\_20\_InformationSource\_735\_89  
 m04\_HierarchicalChildCode = "" rem set a code value

val\_1\_AdditionalSubordinateHLDataSegmentinThisHierarchicalStructure\_736\_91

**Property Loop2000A\_PRV\_00\_BillingPaytoProviderSpecialtyInformation**

**Element Members**

m01\_ProviderCode = "" rem set a code value  
     val\_BI\_Billing\_1221\_94  
     val\_PT\_PayTo\_1221\_94  
 m02\_ReferenceIdentificationQualifier = "" rem set a code value  
     val\_ZZ\_MutuallyDefined\_128\_97  
 m03\_ProviderTaxonomyCode = ""

**Property Loop2000A\_CUR\_00\_ForeignCurrencyInformation**

**Element Members**

m01\_EntityIdentifierCode = "" rem set a code value  
     val\_85\_BillingProvider\_98\_104  
 m02\_CurrencyCode = ""

**Property Loop2010AA\_NM1\_00\_BillingProviderName**

**Element Members**

m01\_EntityIdentifierCode = "" rem set a code value  
     val\_85\_BillingProvider\_98\_127  
 m02\_EntityTypeQualifier = "" rem set a code value  
     val\_1\_Person\_1065\_129  
     val\_2\_NonPersonEntity\_1065\_129  
 m03\_BillingProviderLastorOrganizationalName = ""  
 m04\_BillingProviderFirstName = ""  
 m05\_BillingProviderMiddleName = ""  
 m07\_BillingProviderNameSuffix = ""  
 m08\_IdentificationCodeQualifier = "" rem set a code value  
     val\_24\_EmployersIdentificationNumber\_66\_137  
     val\_34\_SocialSecurityNumber\_66\_137  
     val\_XX\_HealthCareFinancingAdministrationNationalProvider\_66\_137  
 m09\_BillingProviderIdentifier = ""

**Property Loop2010AA\_N2\_00\_AdditionalBillingProviderNameInformation**

**Element Members**

m01\_BillingProviderAdditionalName = ""

**Property Loop2010AA\_N3\_00\_BillingProviderAddress**

**Element Members**

m01\_BillingProviderAddressLine = ""  
 m02\_BillingProviderAddressLine = ""

**Property Loop2010AA\_N4\_00\_BillingProviderCityStateZIPCode**

**Element Members**

m01\_BillingProviderCityName = ""  
 m02\_BillingProviderStateorProvinceCode = ""  
 m03\_BillingProviderPostalZoneorZIPCode = ""  
 m04\_CountryCode = ""

**Property Loop2010AA\_REF\_00\_BillingProviderSecondaryIdentification****Element Members**

m01\_ReferenceIdentificationQualifier = "" rem set a code value  
 val\_0B\_StateLicenseNumber\_128\_158  
 val\_1A\_BlueCrossProviderNumber\_128\_158  
 val\_1B\_BlueShieldProviderNumber\_128\_158  
 val\_1C\_MedicareProviderNumber\_128\_158  
 val\_1D\_MedicaidProviderNumber\_128\_158  
 val\_1G\_ProviderUPINNumber\_128\_158  
 val\_1H\_CHAMPUSIdentificationNumber\_128\_158  
 val\_1J\_FacilityIDNumber\_128\_158  
 val\_B3\_PREFERREDProviderOrganizationNumber\_128\_158  
 val\_BQ\_HealthMaintenanceOrganizationCodeNumber\_128\_158  
 val\_EI\_EmployersIdentificationNumber\_128\_158  
 val\_FH\_ClinicNumber\_128\_158  
 val\_G2\_ProviderCommercialNumber\_128\_158  
 val\_G5\_ProviderSiteNumber\_128\_158  
 val\_LU\_LocationNumber\_128\_158  
 val\_SY\_SocialSecurityNumber\_128\_158  
 val\_U3\_UniqueSupplierIdentificationNumberUSIN\_128\_158  
 val\_X5\_StateIndustrialAccidentProviderNumber\_128\_158  
 m02\_BillingProviderAdditionalIdentifier = ""

**Property Loop2010AA\_REF\_01\_CreditDebitCardBillingInformation****Element Members**

m01\_ReferenceIdentificationQualifier = "" rem set a code value  
 val\_06\_SystemNumber\_128\_181  
 val\_8U\_BankAssignedSecurityIdentifier\_128\_181  
 val\_EM\_ElectronicPaymentReferenceNumber\_128\_181  
 val\_IJ\_StandardIndustryClassificationSICCode\_128\_181  
 val\_LU\_LocationNumber\_128\_181  
 val\_RB\_Ratecodenumber\_128\_181  
 val\_ST\_StoreNumber\_128\_181  
 val\_TT\_TerminalCode\_128\_181  
 m02\_BillingProviderAdditionalIdentifier = ""

**Property Loop2010AA\_PER\_00\_BillingProviderContactInformation****Element Members**

m01\_ContactFunctionCode = "" rem set a code value  
 val\_IC\_InformationContact\_366\_194  
 m02\_BillingProviderContactName = ""  
 m03\_CommunicationNumberQualifier = "" rem set a code value  
 val\_EM\_ElectronicMail\_365\_197

```

        val_FX_Facsimile_365_197
        val_TE_Telephone_365_197
m04_CommunicationNumber = ""
m05_CommunicationNumberQualifier = "" rem set a code value
        val_EM_ElectronicMail_365_202
        val_EX_TelephoneExtension_365_202
        val_FX_Facsimile_365_202
        val_TE_Telephone_365_202
m06_CommunicationNumber = ""
m07_CommunicationNumberQualifier = "" rem set a code value
        val_EM_ElectronicMail_365_208
        val_EX_TelephoneExtension_365_208
        val_FX_Facsimile_365_208
        val_TE_Telephone_365_208
m08_CommunicationNumber = ""

```

**Property Loop2010AB\_NM1\_00\_PaytoProviderName**

**Element Members**

```

m01_EntityIdentifierCode = "" rem set a code value
        val_87_PaytoProvider_98_216
m02_EntityTypeQualifier = "" rem set a code value
        val_1_Person_1065_218
        val_2_NonPersonEntity_1065_218
m03_PaytoProviderLastorOrganizationalName = ""
m04_PaytoProviderFirstName = ""
m05_PaytoProviderMiddleName = ""
m07_PaytoProviderNameSuffix = ""
m08_IdentificationCodeQualifier = "" rem set a code value
        val_24_EmployersIdentificationNumber_66_226
        val_34_SocialSecurityNumber_66_226
        val_XX_HealthCareFinancingAdministrationNationalProvider_66_226
m09_PaytoProviderIdentifier = ""

```

**Property Loop2010AB\_N2\_00\_AdditionalPaytoProviderNameInformation**

**Element Members**

```

m01_PaytoProviderAdditionalName = ""

```

**Property Loop2010AB\_N3\_00\_PaytoProviderAddress**

**Element Members**

```

m01_PaytoProviderAddressLine = ""
m02_PaytoProviderAddressLine = ""

```

**Property Loop2010AB\_N4\_00\_PaytoProviderCityStateZIPCode**

**Element Members**

```

m01_PaytoProviderCityName = ""
m02_PaytoProviderStateCode = ""
m03_PaytoProviderPostalZoneorZIPCode = ""
m04_CountryCode = ""

```

**Property Loop2010AB\_REF\_00\_PaytoProviderSecondaryIdentification****Element Members**

m01\_ReferenceIdentificationQualifier = "" rem set a code value  
     val\_0B\_StateLicenseNumber\_128\_247  
     val\_1A\_BlueCrossProviderNumber\_128\_247  
     val\_1B\_BlueShieldProviderNumber\_128\_247  
     val\_1C\_MedicareProviderNumber\_128\_247  
     val\_1D\_MedicaidProviderNumber\_128\_247  
     val\_1G\_ProviderUPINNumber\_128\_247  
     val\_1H\_CHAMPUSIdentificationNumber\_128\_247  
     val\_1J\_FacilityIDNumber\_128\_247  
     val\_B3\_PREFERREDProviderOrganizationNumber\_128\_247  
     val\_BQ\_HealthMaintenanceOrganizationCodeNumber\_128\_247  
     val\_EI\_EmployersIdentificationNumber\_128\_247  
     val\_FH\_ClinicNumber\_128\_247  
     val\_G2\_ProviderCommercialNumber\_128\_247  
     val\_G5\_ProviderSiteNumber\_128\_247  
     val\_LU\_LocationNumber\_128\_247  
     val\_SY\_SocialSecurityNumber\_128\_247  
     val\_U3\_UniqueSupplierIdentificationNumberUSIN\_128\_247  
     val\_X5\_StateIndustrialAccidentProviderNumber\_128\_247  
 m02\_PaytoProviderIdentifier = ""

**Property Loop2000B\_HL\_00\_SubscriberHierarchicalLevel****Element Members**

m01\_HierarchicalIDNumber = ""  
 m02\_HierarchicalParentIDNumber = ""  
 m03\_HierarchicalLevelCode = "" rem set a code value  
     val\_22\_Subscriber\_735\_272  
 m04\_HierarchicalChildCode = "" rem set a code value  
     val\_0\_NoSubordinateHLSegmentinThisHierarchicalStructure\_736\_274  
  
 val\_1\_AdditionalSubordinateHLDataSegmentinThisHierarchicalStructure\_736\_274

**Property Loop2000B\_SBR\_00\_SubscriberInformation****Element Members**

m01\_PayerResponsibilitySequenceNumberCode = "" rem set a code value  
     val\_P\_Primary\_1138\_278  
     val\_S\_Secondary\_1138\_278  
     val\_T\_Tertiary\_1138\_278  
 m02\_IndividualRelationshipCode = "" rem set a code value  
     val\_18\_Self\_1069\_282  
 m03\_InsuredGrouporPolicyNumber = ""  
 m04\_InsuredGroupName = ""  
 m05\_InsuranceTypeCode = "" rem set a code value  
  
 val\_12\_MedicareSecondaryWorkingAgedBeneficiaryorSpousewithEmployerGroup\_1336

val\_13\_MedicareSecondaryEndStageRenalDiseaseBeneficiaryinthe12month\_1336\_286  
 val\_14\_MedicareSecondaryNofaultInsuranceincludingAutoisPrimary\_1336\_286  
     val\_15\_MedicareSecondaryWorkersCompensation\_1336\_286  
  
 val\_16\_MedicareSecondaryPublicHealthServicePHSorOtherFederalAgency\_1336\_286  
     val\_41\_MedicareSecondaryBlackLung\_1336\_286  
     val\_42\_MedicareSecondaryVeteransAdministration\_1336\_286  
  
 val\_43\_MedicareSecondaryDisabledBeneficiaryUnderAge65withLargeGroupHealth\_1336\_286  
     val\_47\_MedicareSecondaryOtherLiabilityInsuranceisPrimary\_1336\_286  
 m09\_ClaimFilingIndicatorCode = "" rem set a code value  
     val\_09\_Selfpay\_1032\_299  
     val\_10\_CentralCertification\_1032\_299  
     val\_11\_OtherNonFederalPrograms\_1032\_299  
     val\_12\_PREFERREDProviderOrganizationPPO\_1032\_299  
     val\_13\_PointofServicePOS\_1032\_299  
     val\_14\_ExclusiveProviderOrganizationEPO\_1032\_299  
     val\_15\_IndemnityInsurance\_1032\_299  
     val\_16\_HealthMaintenanceOrganizationHMOMedicareRisk\_1032\_299  
     val\_AM\_AutomobileMedical\_1032\_299  
     val\_BL\_BlueCrossBlueShield\_1032\_299  
     val\_CH\_Champus\_1032\_299  
     val\_CI\_CommercialInsuranceCo\_1032\_299  
     val\_DS\_Disability\_1032\_299  
     val\_HM\_HealthMaintenanceOrganization\_1032\_299  
     val\_LI\_Liability\_1032\_299  
     val\_LM\_LiabilityMedical\_1032\_299  
     val\_MB\_MedicarePartB\_1032\_299  
     val\_MC\_Medicaid\_1032\_299  
     val\_OF\_OtherFederalProgram\_1032\_299  
     val\_TV\_TitleV\_1032\_299  
     val\_VA\_VeteranAdministrationPlan\_1032\_299  
     val\_WC\_WorkersCompensationHealthClaim\_1032\_299  
     val\_ZZ\_MutuallyDefined\_1032\_299

#### Property Loop2000B\_PAT\_00\_PatientInformation

##### Element Members

m05\_DateTimePeriodFormatQualifier = "" rem set a code value  
     val\_D8\_DateExpressedinFormatCCYYMMDD\_1250\_328  
 m06\_InsuredIndividualDeathDate = ""  
 m07\_UnitofBasisforMeasurementCode = "" rem set a code value  
     val\_GR\_Gram\_355\_331  
 m08\_PatientWeight = ""  
 m09\_PregnancyIndicator = "" rem set a code value  
     val\_Y\_Yes\_1073\_334

#### Property Loop2010BA\_NM1\_00\_SubscriberName

##### Element Members

m01\_EntityIdentifierCode = "" rem set a code value

```

        val_IL_InsuredorSubscriber_98_337
m02_EntityTypeQualifier = "" rem set a code value
        val_1_Person_1065_339
        val_2_NonPersonEntity_1065_339
m03_SubscriberLastName = ""
m04_SubscriberFirstName = ""
m05_SubscriberMiddleName = ""
m07_SubscriberNameSuffix = ""
m08_IdentificationCodeQualifier = "" rem set a code value
        val_MI_MemberIdentificationNumber_66_347
        val_ZZ_MutuallyDefined_66_347
m09_SubscriberPrimaryIdentifier = ""

```

**Property Loop2010BA\_N2\_00\_AdditionalSubscriberNameInformation**

**Element Members**

```
m01_SubscriberSupplementalDescription = ""
```

**Property Loop2010BA\_N3\_00\_SubscriberAddress**

**Element Members**

```
m01_SubscriberAddressLine = ""
m02_SubscriberAddressLine = ""
```

**Property Loop2010BA\_N4\_00\_SubscriberCityStateZIPCode**

**Element Members**

```
m01_SubscriberCityName = ""
m02_SubscriberStateCode = ""
m03_SubscriberPostalZoneorZIPCode = ""
m04_CountryCode = ""
```

**Property Loop2010BA\_DMG\_00\_SubscriberDemographicInformation**

**Element Members**

```
m01_DateTimePeriodFormatQualifier = "" rem set a code value
        val_D8_DateExpressedinFormatCCYYMMDD_1250_367
m02_SubscriberBirthDate = ""
m03_SubscriberGenderCode = "" rem set a code value
        val_F_Female_1068_370
        val_M_Male_1068_370
        val_U_Unknown_1068_370

```

**Property Loop2010BA\_REF\_00\_SubscriberSecondaryIdentification**

**Element Members**

```
m01_ReferenceIdentificationQualifier = "" rem set a code value
        val_1W_MemberIdentificationNumber_128_381
        val_23_ClientNumber_128_381
        val_IG_InsurancePolicyNumber_128_381
        val_SY_SocialSecurityNumber_128_381

```

m02\_SubscriberSupplementalIdentifier = ""

**Property Loop2010BA\_REF\_01\_PropertyandCasualtyClaimNumber**

**Element Members**

m01\_ReferenceIdentificationQualifier = "" rem set a code value  
 val\_Y4\_AgencyClaimNumber\_128\_390  
 m02\_SubscriberSupplementalIdentifier = ""

**Property Loop2010BB\_NM1\_00\_PayerName**

**Element Members**

m01\_EntityIdentifierCode = "" rem set a code value  
 val\_PR\_Payer\_98\_396  
 m02\_EntityTypeQualifier = "" rem set a code value  
 val\_2\_NonPersonEntity\_1065\_398  
 m03\_PayerName = ""  
 m08\_IdentificationCodeQualifier = "" rem set a code value  
 val\_PI\_PayorIdentification\_66\_405  
  
 val\_XV\_HealthCareFinancingAdministrationNationalPlanIDBIRequiredifthe\_66\_405  
 m09\_PayerIdentifier = ""

**Property Loop2010BB\_N2\_00\_AdditionalPayerNameInformation**

**Element Members**

m01\_PayerAdditionalName = ""

**Property Loop2010BB\_N3\_00\_PayerAddress**

**Element Members**

m01\_PayerAddressLine = ""  
 m02\_PayerAddressLine = ""

**Property Loop2010BB\_N4\_00\_PayerCityStateZIPCode**

**Element Members**

m01\_PayerCityName = ""  
 m02\_PayerStateCode = ""  
 m03\_PayerPostalZoneorZIPCode = ""  
 m04\_CountryCode = ""

**Property Loop2010BB\_REF\_00\_PayerSecondaryIdentification**

**Element Members**

m01\_ReferenceIdentificationQualifier = "" rem set a code value  
 val\_2U\_PayerIdentificationNumber\_128\_425  
 val\_FY\_ClaimOfficeNumber\_128\_425  
  
 val\_NF\_NationalAssociationofInsuranceCommissionersNAICCode\_128\_425

```

        val_TJ_FederalTaxpayersIdentificationNumber_128_425
m02_PayerAdditionalIdentifier = ""

```

**Property Loop2010BC\_NM1\_00\_ResponsiblePartyName**

**Element Members**

```

m01_EntityIdentifierCode = "" rem set a code value
    val_QD_ResponsibleParty_98_434
m02_EntityTypeQualifier = "" rem set a code value
    val_1_Person_1065_436
    val_2_NonPersonEntity_1065_436
m03_ResponsiblePartyLastorOrganizationName = ""
m04_ResponsiblePartyFirstName = ""
m05_ResponsiblePartyMiddleName = ""
m07_ResponsiblePartySuffixName = ""

```

**Property Loop2010BC\_N2\_00\_AdditionalResponsiblePartyNameInformation**

**Element Members**

```

m01_ResponsiblePartyAdditionalName = ""

```

**Property Loop2010BC\_N3\_00\_ResponsiblePartyAddress**

**Element Members**

```

m01_ResponsiblePartyAddressLine = ""
m02_ResponsiblePartyAddressLine = ""

```

**Property Loop2010BC\_N4\_00\_ResponsiblePartyCityStateZIPCode**

**Element Members**

```

m01_ResponsiblePartyCityName = ""
m02_ResponsiblePartyStateCode = ""
m03_ResponsiblePartyPostalZoneorZIPCode = ""
m04_CountryCode = ""

```

**Property Loop2010BD\_NM1\_00\_CreditDebitCardHolderName**

**Element Members**

```

m01_EntityIdentifierCode = "" rem set a code value
    val_AO_AccountOf_98_462
m02_EntityTypeQualifier = "" rem set a code value
    val_1_Person_1065_464
    val_2_NonPersonEntity_1065_464
m03_CreditorDebitCardHolderLastorOrganizationalName = ""
m04_CreditorDebitCardHolderFirstName = ""
m05_CreditorDebitCardHolderMiddleName = ""
m07_CreditorDebitCardHolderNameSuffix = ""
m08_IdentificationCodeQualifier = "" rem set a code value
    val_MI_MemberIdentificationNumber_66_472
m09_CreditorDebitCardNumber = ""

```

**Property Loop2010BD\_N2\_00\_AdditionalCreditDebitCardHolderNameInformation****Element Members**

m01\_CreditorDebitCardHolderAdditionalName = ""

**Property Loop2010BD\_REF\_00\_CreditDebitCardInformation****Element Members**

m01\_ReferenceIdentificationQualifier = "" rem set a code value  
 val\_AB\_AcceptableSourcePurchaserID\_128\_481  
 val\_BB\_AuthorizationNumber\_128\_481  
 m02\_CreditorDebitCardAuthorizationNumber = ""

**Property Loop2000C\_HL\_00\_PatientHierarchicalLevel****Element Members**

m01\_HierarchicalIDNumber = ""  
 m02\_HierarchicalParentIDNumber = ""  
 m03\_HierarchicalLevelCode = "" rem set a code value  
 val\_23\_Dependent\_735\_490  
 m04\_HierarchicalChildCode = "" rem set a code value  
 val\_0\_NoSubordinateHLSegmentinThisHierarchicalStructure\_736\_492

**Property Loop2000C\_PAT\_00\_PatientInformation****Element Members**

m01\_IndividualRelationshipCode = "" rem set a code value  
 val\_01\_Spouse\_1069\_495  
 val\_04\_GrandfatherorGrandmother\_1069\_495  
 val\_05\_GrandsonorGranddaughter\_1069\_495  
 val\_07\_NepheworNiece\_1069\_495  
 val\_09\_AdoptedChild\_1069\_495  
 val\_10\_FosterChild\_1069\_495  
 val\_15\_Ward\_1069\_495  
 val\_17\_StepsonorStepdaughter\_1069\_495  
 val\_19\_Child\_1069\_495  
 val\_20\_Employee\_1069\_495  
 val\_21\_Unknown\_1069\_495  
 val\_22\_HandicappedDependent\_1069\_495  
 val\_23\_SponsoredDependent\_1069\_495  
 val\_24\_DependentofaMinorDependent\_1069\_495  
 val\_29\_SignificantOther\_1069\_495  
 val\_32\_Mother\_1069\_495  
 val\_33\_Father\_1069\_495  
 val\_34\_OtherAdult\_1069\_495  
 val\_36\_EmancipatedMinor\_1069\_495  
 val\_39\_OrganDonor\_1069\_495  
 val\_40\_CadaverDonor\_1069\_495  
 val\_41\_InjuredPlaintiff\_1069\_495  
 val\_43\_ChildWhereInsuredHasNoFinancialResponsibility\_1069\_495  
 val\_53\_LifePartner\_1069\_495  
 val\_G8\_OtherRelationship\_1069\_495

m05\_DateTimePeriodFormatQualifier = "" rem set a code value  
     val\_D8\_DateExpressedinFormatCCYYMMDD\_1250\_524  
 m06\_PatientDeathDate = ""  
 m07\_UnitorBasisforMeasurementCode = "" rem set a code value  
     val\_GR\_Gram\_355\_527  
 m08\_PatientWeight = ""  
 m09\_PregnancyIndicator = "" rem set a code value  
     val\_Y\_Yes\_1073\_530

**Property Loop2010CA\_NM1\_00\_PatientName**

**Element Members**

m01\_EntityIdentifierCode = "" rem set a code value  
     val\_QC\_Patient\_98\_533  
 m02\_EntityTypeQualifier = "" rem set a code value  
     val\_1\_Person\_1065\_535  
 m03\_PatientLastName = ""  
 m04\_PatientFirstName = ""  
 m05\_PatientMiddleName = ""  
 m07\_PatientNameSuffix = ""  
 m08\_IdentificationCodeQualifier = "" rem set a code value  
     val\_MI\_MemberIdentificationNumber\_66\_542  
     val\_ZZ\_MutuallyDefined\_66\_542  
 m09\_PatientPrimaryIdentifier = ""

**Property Loop2010CA\_N2\_00\_AdditionalPatientNameInformation**

**Element Members**

m01\_PatientAdditionalName = ""

**Property Loop2010CA\_N3\_00\_PatientAddress**

**Element Members**

m01\_PatientAddressLine = ""  
 m02\_PatientAddressLine = ""

**Property Loop2010CA\_N4\_00\_PatientCityStateZIPCode**

**Element Members**

m01\_PatientCityName = ""  
 m02\_PatientStateCode = ""  
 m03\_PatientPostalZoneorZIPCode = ""  
 m04\_CountryCode = ""

**Property Loop2010CA\_DMG\_00\_PatientDemographicInformation**

**Element Members**

m01\_DateTimePeriodFormatQualifier = "" rem set a code value  
     val\_D8\_DateExpressedinFormatCCYYMMDD\_1250\_562  
 m02\_PatientBirthDate = ""  
 m03\_PatientGenderCode = "" rem set a code value

val\_F\_Female\_1068\_565  
 val\_M\_Male\_1068\_565  
 val\_U\_Unknown\_1068\_565

**Property Loop2010CA\_REF\_00\_PatientSecondaryIdentification**

**Element Members**

m01\_ReferenceIdentificationQualifier = "" rem set a code value  
 val\_1W\_MemberIdentificationNumber\_128\_576  
 val\_23\_ClientNumber\_128\_576  
 val\_IG\_InsurancePolicyNumber\_128\_576  
 val\_SY\_SocialSecurityNumber\_128\_576  
 m02\_PatientSecondaryIdentifier = ""

**Property Loop2010CA\_REF\_01\_PropertyandCasualtyClaimNumber**

**Element Members**

m01\_ReferenceIdentificationQualifier = "" rem set a code value  
 val\_Y4\_AgencyClaimNumber\_128\_585  
 m02\_PatientSecondaryIdentifier = ""

**Property Loop2300\_CLM\_00\_ClaimInformation**

**Element Members**

m01\_PatientAccountNumber = ""  
 m02\_TotalClaimChargeAmount = ""  
 m0501\_FacilityTypeCode = ""  
 m0503\_ClaimFrequencyCode = ""  
 m06\_ProviderorSupplierSignatureIndicator = "" rem set a code value  
 val\_N\_No\_1073\_599  
 val\_Y\_Yes\_1073\_599  
 m07\_MedicareAssignmentCode = "" rem set a code value  
 val\_A\_Assigned\_1359\_602  
 val\_B\_AssignmentAcceptedonClinicalLabServicesOnly\_1359\_602  
 val\_C\_NotAssigned\_1359\_602  
 val\_P\_PatientRefusestoAssignBenefits\_1359\_602  
 m08\_BenefitsAssignmentCertificationIndicator = "" rem set a code value  
 val\_N\_No\_1073\_607  
 val\_Y\_Yes\_1073\_607  
 m09\_ReleaseofInformationCode = "" rem set a code value  
 val\_A\_AppropriateReleaseofInformationonFileatHealthCareServiceProvider\_1363\_610  
 val\_I\_InformedConsenttoReleaseMedicalInformationforConditionsorDiagnoses\_1363\_610  
 0  
 val\_M\_TheProviderhasLimitedorRestrictedAbilitytoReleaseDataRelatedtoa\_1363\_610  
 val\_N\_NoProviderisNotAllowedtoReleaseData\_1363\_610  
 val\_O\_OnfileatPayororatPlanSponsor\_1363\_610  
 val\_Y\_YesProviderhasaSignedStatementPermittingReleaseofMedicalBilling\_1363\_610  
 m10\_PatientSignatureSourceCode = "" rem set a code value

```

val_B_SignedsignatureauthorizationformorformsforbothHCFA1500ClaimForm_1351_617
    val_C_SignedHCFA1500ClaimFormonfile_1351_617

val_M_SignedsignatureauthorizationformforHCFA1500ClaimFormblock13on_1351_617

val_P_Signaturegeneratedbyproviderbecausethepatientwasnotphysically_1351_617

val_S_SignedsignatureauthorizationformforHCFA1500ClaimFormblock12on_1351_617
m1101_RelatedCausesCode = "" rem set a code value
    val_AA_AutoAccident_1362_624
    val_AB_Abuse_1362_624
    val_AP_AnotherPartyResponsible_1362_624
    val_EM_Employment_1362_624
    val_OA_OtherAccident_1362_624
m1102_RelatedCausesCode = "" rem set a code value
    val_AA_AutoAccident_1362_630
    val_AB_Abuse_1362_630
    val_AP_AnotherPartyResponsible_1362_630
    val_EM_Employment_1362_630
    val_OA_OtherAccident_1362_630
m1103_RelatedCausesCode = "" rem set a code value
    val_AA_AutoAccident_1362_636
    val_AB_Abuse_1362_636
    val_AP_AnotherPartyResponsible_1362_636
    val_EM_Employment_1362_636
    val_OA_OtherAccident_1362_636
m1104_AutoAccidentStateorProvinceCode = ""
m1105_CountryCode = ""
m12_SpecialProgramIndicator = "" rem set a code value

val_01_EarlyPeriodicScreeningDiagnosisandTreatmentEPSDTorChildHealth_1366_644
    val_02_PhysicallyHandicappedChildrensProgram_1366_644
    val_03_SpecialFederalFunding_1366_644
    val_05_Disability_1366_644
    val_07_InducedAbortionDangertoLife_1366_644
    val_08_InducedAbortionRapeorIncest_1366_644
    val_09_SecondOpinionorSurgery_1366_644
m16_ParticipationAgreement = "" rem set a code value
    val_P_ParticipationAgreement_1360_655
m20_DelayReasonCode = "" rem set a code value
    val_1_ProofofEligibilityUnknownorUnavailable_1514_660
    val_2_Litigation_1514_660
    val_3_AuthorizationDelays_1514_660
    val_4_DelayinCertifyingProvider_1514_660
    val_5_DelayinSupplyingBillingForms_1514_660
    val_6_DelayinDeliveryofCustommadeAppliances_1514_660
    val_7_ThirdPartyProcessingDelay_1514_660
    val_8_DelayinEligibilityDetermination_1514_660

val_9_OriginalClaimRejectedorDeniedDuetoaReasonUnrelatedtotheBilling_1514_660
    val_10_AdministrationDelayinthePriorApprovalProcess_1514_660
    val_11_Other_1514_660

```

**Element Members**

m01\_DateTimeQualifier = "" rem set a code value  
 val\_938\_Order\_374\_673  
 m02\_DateTimePeriodFormatQualifier = "" rem set a code value  
 val\_D8\_DateExpressedinFormatCCYYMMDD\_1250\_675  
 m03\_OrderDate = ""

**Property Loop2300\_DTP\_01\_DateInitialTreatment****Element Members**

m01\_DateTimeQualifier = "" rem set a code value  
 val\_454\_InitialTreatment\_374\_679  
 m02\_DateTimePeriodFormatQualifier = "" rem set a code value  
 val\_D8\_DateExpressedinFormatCCYYMMDD\_1250\_681  
 m03\_OrderDate = ""

**Property Loop2300\_DTP\_02\_DateReferralDate****Element Members**

m01\_DateTimeQualifier = "" rem set a code value  
 val\_330\_ReferralDate\_374\_685  
 m02\_DateTimePeriodFormatQualifier = "" rem set a code value  
 val\_D8\_DateExpressedinFormatCCYYMMDD\_1250\_687  
 m03\_OrderDate = ""

**Property Loop2300\_DTP\_03\_DateDateLastSeen****Element Members**

m01\_DateTimeQualifier = "" rem set a code value  
 val\_304\_LatestVisitorConsultation\_374\_691  
 m02\_DateTimePeriodFormatQualifier = "" rem set a code value  
 val\_D8\_DateExpressedinFormatCCYYMMDD\_1250\_693  
 m03\_OrderDate = ""

**Property Loop2300\_DTP\_04\_DateOnsetofCurrentIllnessSymptom****Element Members**

m01\_DateTimeQualifier = "" rem set a code value  
 val\_431\_OnsetofCurrentSymptomsorIllness\_374\_697  
 m02\_DateTimePeriodFormatQualifier = "" rem set a code value  
 val\_D8\_DateExpressedinFormatCCYYMMDD\_1250\_699  
 m03\_OrderDate = ""

**Property Loop2300\_DTP\_05\_DateAcuteManifestation****Element Members**

m01\_DateTimeQualifier = "" rem set a code value  
 val\_453\_AcuteManifestationofaChronicCondition\_374\_703  
 m02\_DateTimePeriodFormatQualifier = "" rem set a code value  
 val\_D8\_DateExpressedinFormatCCYYMMDD\_1250\_705

m03\_OrderDate = ""

**Property Loop2300\_DTP\_06\_DateSimilarIllnessSymptomOnset**

**Element Members**

m01\_DateTimeQualifier = "" rem set a code value  
     val\_438\_OnsetofSimilarSymptomsorIllness\_374\_709  
 m02\_DateTimePeriodFormatQualifier = "" rem set a code value  
     val\_D8\_DateExpressedinFormatCCYYMMDD\_1250\_711  
 m03\_OrderDate = ""

**Property Loop2300\_DTP\_07\_DateAccident**

**Element Members**

m01\_DateTimeQualifier = "" rem set a code value  
     val\_439\_Accident\_374\_715  
 m02\_DateTimePeriodFormatQualifier = "" rem set a code value  
     val\_D8\_DateExpressedinFormatCCYYMMDD\_1250\_717  
  
 val\_DT\_DateandTimeExpressedinFormatCCYYMMDDHHMM\_1250\_717  
 m03\_OrderDate = ""

**Property Loop2300\_DTP\_08\_DateLastMenstrualPeriod**

**Element Members**

m01\_DateTimeQualifier = "" rem set a code value  
     val\_484\_LastMenstrualPeriod\_374\_722  
 m02\_DateTimePeriodFormatQualifier = "" rem set a code value  
     val\_D8\_DateExpressedinFormatCCYYMMDD\_1250\_724  
 m03\_OrderDate = ""

**Property Loop2300\_DTP\_09\_DateLastXray**

**Element Members**

m01\_DateTimeQualifier = "" rem set a code value  
     val\_455\_LastXRay\_374\_728  
 m02\_DateTimePeriodFormatQualifier = "" rem set a code value  
     val\_D8\_DateExpressedinFormatCCYYMMDD\_1250\_730  
 m03\_OrderDate = ""

**Property Loop2300\_DTP\_10\_DateEstimatedDateofBirth**

**Element Members**

m01\_DateTimeQualifier = "" rem set a code value  
     val\_ABC\_EstimatedDateofBirth\_374\_734  
 m02\_DateTimePeriodFormatQualifier = "" rem set a code value  
     val\_D8\_DateExpressedinFormatCCYYMMDD\_1250\_736  
 m03\_OrderDate = ""

**Property Loop2300\_DTP\_11\_DateHearingandVisionPrescriptionDate**

**Element Members**

m01\_DateTimeQualifier = "" rem set a code value  
     val\_471\_Prescription\_374\_740  
 m02\_DateTimePeriodFormatQualifier = "" rem set a code value  
     val\_D8\_DateExpressedinFormatCCYYMMDD\_1250\_742  
 m03\_OrderDate = ""

**Property Loop2300\_DTP\_12\_DateDisabilityBegin****Element Members**

m01\_DateTimeQualifier = "" rem set a code value  
     val\_360\_DisabilityBegin\_374\_746  
 m02\_DateTimePeriodFormatQualifier = "" rem set a code value  
     val\_D8\_DateExpressedinFormatCCYYMMDD\_1250\_748  
 m03\_OrderDate = ""

**Property Loop2300\_DTP\_13\_DateDisabilityEnd****Element Members**

m01\_DateTimeQualifier = "" rem set a code value  
     val\_361\_DisabilityEnd\_374\_752  
 m02\_DateTimePeriodFormatQualifier = "" rem set a code value  
     val\_D8\_DateExpressedinFormatCCYYMMDD\_1250\_754  
 m03\_OrderDate = ""

**Property Loop2300\_DTP\_14\_DateLastWorked****Element Members**

m01\_DateTimeQualifier = "" rem set a code value  
     val\_297\_DateLastWorked\_374\_758  
 m02\_DateTimePeriodFormatQualifier = "" rem set a code value  
     val\_D8\_DateExpressedinFormatCCYYMMDD\_1250\_760  
 m03\_OrderDate = ""

**Property Loop2300\_DTP\_15\_DateAuthorizedReturntoWork****Element Members**

m01\_DateTimeQualifier = "" rem set a code value  
     val\_296\_ReturntoWork\_374\_764  
 m02\_DateTimePeriodFormatQualifier = "" rem set a code value  
     val\_D8\_DateExpressedinFormatCCYYMMDD\_1250\_766  
 m03\_OrderDate = ""

**Property Loop2300\_DTP\_16\_DateAdmission****Element Members**

m01\_DateTimeQualifier = "" rem set a code value  
     val\_435\_Admission\_374\_770  
 m02\_DateTimePeriodFormatQualifier = "" rem set a code value  
     val\_D8\_DateExpressedinFormatCCYYMMDD\_1250\_772

m03\_OrderDate = ""

**Property Loop2300\_DTP\_17\_DateDischarge**

**Element Members**

m01\_DateTimeQualifier = "" rem set a code value  
     val\_096\_Discharge\_374\_776  
 m02\_DateTimePeriodFormatQualifier = "" rem set a code value  
     val\_D8\_DateExpressedinFormatCCYYMMDD\_1250\_778  
 m03\_OrderDate = ""

**Property Loop2300\_DTP\_18\_DateAssumedandRelinquishedCareDates**

**Element Members**

m01\_DateTimeQualifier = "" rem set a code value  
     val\_090\_ReportStart\_374\_782  
     val\_091\_ReportEnd\_374\_782  
 m02\_DateTimePeriodFormatQualifier = "" rem set a code value  
     val\_D8\_DateExpressedinFormatCCYYMMDD\_1250\_785  
 m03\_OrderDate = ""

**Property Loop2300\_PWK\_00\_ClaimSupplementallInformation**

**Element Members**

m01\_AttachmentReportTypeCode = "" rem set a code value  
     val\_77\_SupportDataforVerification\_755\_789  
     val\_AS\_AdmissionSummary\_755\_789  
     val\_B2\_Prescription\_755\_789  
     val\_B3\_PhysicianOrder\_755\_789  
     val\_B4\_ReferralForm\_755\_789  
     val\_CT\_Certification\_755\_789  
     val\_DA\_DentalModels\_755\_789  
     val\_DG\_DiagnosticReport\_755\_789  
     val\_DS\_DischargeSummary\_755\_789  
  
     val\_EB\_ExplanationofBenefitsCoordinationofBenefitsorMedicareSecondary\_755\_789  
     val\_MT\_Models\_755\_789  
     val\_NN\_NursingNotes\_755\_789  
     val\_OB\_OperativeNote\_755\_789  
     val\_OZ\_SupportDataforClaim\_755\_789  
     val\_PN\_PhysicalTherapyNotes\_755\_789  
     val\_PO\_ProstheticsorOrthoticCertification\_755\_789  
     val\_PZ\_PhysicalTherapyCertification\_755\_789  
     val\_RB\_RadiologyFilms\_755\_789  
     val\_RR\_RadiologyReports\_755\_789  
     val\_RT\_ReportofTestsandAnalysisReport\_755\_789  
 m02\_AttachmentTransmissionCode = "" rem set a code value  
     val\_AA\_AvailableonRequestatProviderSite\_756\_810  
     val\_BM\_ByMail\_756\_810  
     val\_EL\_ElectronicallyOnly\_756\_810  
     val\_EM\_EMail\_756\_810  
     val\_FX\_ByFax\_756\_810  
 m05\_IdentificationCodeQualifier = "" rem set a code value

val\_AC\_AttachmentControlNumber\_66\_818  
 m06\_AttachmentControlNumber = ""

**Property Loop2300\_CN1\_00\_ContractInformation**

**Element Members**

m01\_ContractTypeCode = "" rem set a code value  
 val\_02\_PerDiem\_1166\_825  
 val\_03\_VariablePerDiem\_1166\_825  
 val\_04\_Flat\_1166\_825  
 val\_05\_Capitated\_1166\_825  
 val\_06\_Percent\_1166\_825  
 val\_09\_Other\_1166\_825  
 m02\_ContractAmount = ""  
 m03\_ContractPercentage = ""  
 m04\_ContractCode = ""  
 m05\_TermsDiscountPercentage = ""  
 m06\_ContractVersionIdentifier = ""

**Property Loop2300\_AMT\_00\_CreditDebitCardMaximumAmount**

**Element Members**

m01\_AmountQualifierCode = "" rem set a code value  
 val\_MA\_MaximumAmount\_522\_838  
 m02\_CreditorDebitCardMaximumAmount = ""

**Property Loop2300\_AMT\_01\_PatientAmountPaid**

**Element Members**

m01\_AmountQualifierCode = "" rem set a code value  
 val\_F5\_PatientAmountPaid\_522\_843  
 m02\_CreditorDebitCardMaximumAmount = ""

**Property Loop2300\_AMT\_02\_TotalPurchasedServiceAmount**

**Element Members**

m01\_AmountQualifierCode = "" rem set a code value  
 val\_NE\_NetBilled\_522\_848  
 m02\_CreditorDebitCardMaximumAmount = ""

**Property Loop2300\_REF\_00\_ServiceAuthorizationExceptionCode**

**Element Members**

m01\_ReferenceIdentificationQualifier = "" rem set a code value  
 val\_4N\_SpecialPaymentReferenceNumber\_128\_853  
 m02\_ServiceAuthorizationExceptionCode = ""

**Property Loop2300\_REF\_01\_MandatoryMedicareSection4081CrossoverIndicator**

**Element Members**

m01\_ReferenceIdentificationQualifier = "" rem set a code value  
 val\_F5\_MedicareVersionCode\_128\_859  
 m02\_ServiceAuthorizationExceptionCode = ""

**Property Loop2300\_REF\_02\_MammographyCertificationNumber**

**Element Members**

m01\_ReferenceIdentificationQualifier = "" rem set a code value  
 val\_EW\_MammographyCertificationNumber\_128\_865  
 m02\_ServiceAuthorizationExceptionCode = ""

**Property Loop2300\_REF\_03\_PriorAuthorizationorReferralNumber**

**Element Members**

m01\_ReferenceIdentificationQualifier = "" rem set a code value  
 val\_9F\_ReferralNumber\_128\_871  
 val\_G1\_PriorAuthorizationNumber\_128\_871  
 m02\_ServiceAuthorizationExceptionCode = ""

**Property Loop2300\_REF\_04\_OriginalReferenceNumberICNDCN**

**Element Members**

m01\_ReferenceIdentificationQualifier = "" rem set a code value  
 val\_F8\_OriginalReferenceNumber\_128\_878  
 m02\_ServiceAuthorizationExceptionCode = ""

**Property Loop2300\_REF\_05\_ClinicalLaboratoryImprovementAmendmentCLIANumber**

**Element Members**

m01\_ReferenceIdentificationQualifier = "" rem set a code value  
 val\_X4\_ClinicalLaboratoryImprovementAmendmentNumber\_128\_884  
 m02\_ServiceAuthorizationExceptionCode = ""

**Property Loop2300\_REF\_06\_RepricedClaimNumber**

**Element Members**

m01\_ReferenceIdentificationQualifier = "" rem set a code value  
 val\_9A\_RepricedClaimReferenceNumber\_128\_890  
 m02\_ServiceAuthorizationExceptionCode = ""

**Property Loop2300\_REF\_07\_AdjustedRepricedClaimNumber**

**Element Members**

m01\_ReferenceIdentificationQualifier = "" rem set a code value  
 val\_9C\_AdjustedRepricedClaimReferenceNumber\_128\_896  
 m02\_ServiceAuthorizationExceptionCode = ""

**Property Loop2300\_REF\_08\_InvestigationalDeviceExemptionNumber**

**Element Members**

```

m01_ReferenceIdentificationQualifier = "" rem set a code value
      val_LX_QualifiedProductsList_128_902
m02_ServiceAuthorizationExceptionCode = ""

```

**Property**

**Loop2300\_REF\_09\_ClaimIdentificationNumberforClearingHousesandOtherTransmissionIntermediaries**

**Element Members**

```

m01_ReferenceIdentificationQualifier = "" rem set a code value
      val_D9_ClaimNumber_128_908
m02_ServiceAuthorizationExceptionCode = ""

```

**Property Loop2300\_REF\_10\_AmbulatoryPatientGroupAPG**

**Element Members**

```

m01_ReferenceIdentificationQualifier = "" rem set a code value
      val_1S_AmbulatoryPatientGroupAPGNumber_128_914
m02_ServiceAuthorizationExceptionCode = ""

```

**Property Loop2300\_REF\_11\_MedicalRecordNumber**

**Element Members**

```

m01_ReferenceIdentificationQualifier = "" rem set a code value
      val_EA_MedicalRecordIdentificationNumber_128_920
m02_ServiceAuthorizationExceptionCode = ""

```

**Property Loop2300\_REF\_12\_DemonstrationProjectIdentifier**

**Element Members**

```

m01_ReferenceIdentificationQualifier = "" rem set a code value
      val_P4_ProjectCode_128_926
m02_ServiceAuthorizationExceptionCode = ""

```

**Property Loop2300\_K3\_00\_FileInformation**

**Element Members**

```

m01_FixedFormatInformation = ""

```

**Property Loop2300\_NTE\_00\_ClaimNote**

**Element Members**

```

m01_NoteReferenceCode = "" rem set a code value
      val_ADD_AdditionalInformation_363_936
      val_CER_CertificationNarrative_363_936
      val_DCP_GoalsRehabilitationPotentialorDischargePlans_363_936
      val_DGN_DiagnosisDescription_363_936
      val_PMT_Payment_363_936
      val_TPO_ThirdPartyOrganizationNotes_363_936
m02_ClaimNoteText = ""

```

**Property Loop2300\_CR1\_00\_AmbulanceTransportInformation****Element Members**

```

m01_UnitorBasisforMeasurementCode = "" rem set a code value
    val_LB_Pound_355_945
m02_PatientWeight = ""
m03_AmbulanceTransportCode = "" rem set a code value
    val_I_InitialTrip_1316_948
    val_R_ReturnTrip_1316_948
    val_T_TransferTrip_1316_948
    val_X_RoundTrip_1316_948
m04_AmbulanceTransportReasonCode = "" rem set a code value

val_A_Patientwastransportedtonearestfacilityforcareofsymptoms_1317_953

val_B_Patientwastransportedforthebenefitofapreferredphysician_1317_953
    val_C_Patientwastransportedforthenearnessoffamilymembers_1317_953

val_D_Patientwastransportedforthecareofaspecialistorforavailabilityof_1317_953
    val_E_PatientTransferredtoRehabilitationFacility_1317_953
m05_UnitorBasisforMeasurementCode = "" rem set a code value
    val_DH_Miles_355_959
m06_TransportDistance = ""
m09_RoundTripPurposeDescription = ""
m10_StretcherPurposeDescription = ""

```

**Property Loop2300\_CR2\_00\_SpinalManipulationServiceInformation****Element Members**

```

m01_TreatmentSeriesNumber = ""
m02_TreatmentCount = ""
m03_SubluxationLevelCode = "" rem set a code value
    val_C1_Cervical1_1367_969
    val_C2_Cervical2_1367_969
    val_C3_Cervical3_1367_969
    val_C4_Cervical4_1367_969
    val_C5_Cervical5_1367_969
    val_C6_Cervical6_1367_969
    val_C7_Cervical7_1367_969
    val_CO_Coccyx_1367_969
    val_IL_Ilium_1367_969
    val_L1_Lumbar1_1367_969
    val_L2_Lumbar2_1367_969
    val_L3_Lumbar3_1367_969
    val_L4_Lumbar4_1367_969
    val_L5_Lumbar5_1367_969
    val_OC_Occiput_1367_969
    val_SA_Sacrum_1367_969
    val_T1_Thoracic1_1367_969
    val_T10_Thoracic10_1367_969
    val_T11_Thoracic11_1367_969
    val_T12_Thoracic12_1367_969
    val_T2_Thoracic2_1367_969
    val_T3_Thoracic3_1367_969

```

```

val_T4_Thoracic4_1367_969
val_T5_Thoracic5_1367_969
val_T6_Thoracic6_1367_969
val_T7_Thoracic7_1367_969
val_T8_Thoracic8_1367_969
val_T9_Thoracic9_1367_969
m04_SubluxationLevelCode = "" rem set a code value
val_C1_Cervical1_1367_998
val_C2_Cervical2_1367_998
val_C3_Cervical3_1367_998
val_C4_Cervical4_1367_998
val_C5_Cervical5_1367_998
val_C6_Cervical6_1367_998
val_C7_Cervical7_1367_998
val_CO_Coccyx_1367_998
val_IL_Ilium_1367_998
val_L1_Lumbar1_1367_998
val_L2_Lumbar2_1367_998
val_L3_Lumbar3_1367_998
val_L4_Lumbar4_1367_998
val_L5_Lumbar5_1367_998
val_OC_Occiput_1367_998
val_SA_Sacrum_1367_998
val_T1_Thoracic1_1367_998
val_T10_Thoracic10_1367_998
val_T11_Thoracic11_1367_998
val_T12_Thoracic12_1367_998
val_T2_Thoracic2_1367_998
val_T3_Thoracic3_1367_998
val_T4_Thoracic4_1367_998
val_T5_Thoracic5_1367_998
val_T6_Thoracic6_1367_998
val_T7_Thoracic7_1367_998
val_T8_Thoracic8_1367_998
val_T9_Thoracic9_1367_998
m05_UnitofBasisforMeasurementCode = "" rem set a code value
val_DA_Days_355_1027
val_MO_Months_355_1027
val_WK_Week_355_1027
val_YR_Years_355_1027
m06_TreatmentPeriodCount = ""
m07_MonthlyTreatmentCount = ""
m08_PatientConditionCode = "" rem set a code value
val_A_AcuteCondition_1342_1034
val_C_ChronicCondition_1342_1034
val_D_Nonacute_1342_1034
val_E_NonLifeThreatening_1342_1034
val_F_Routine_1342_1034
val_G_Symptomatic_1342_1034
val_M_AcuteManifestationofaChronicCondition_1342_1034
m09_ComplicationIndicator = "" rem set a code value
val_N_No_1073_1042
val_Y_Yes_1073_1042
m10_PatientConditionDescription = ""
m11_PatientConditionDescription = ""
m12_XrayAvailabilityIndicator = "" rem set a code value

```

val\_N\_No\_1073\_1047  
val\_Y\_Yes\_1073\_1047

#### Property Loop2300\_CRC\_00\_AmbulanceCertification

##### Element Members

m01\_CodeCategory = "" rem set a code value  
val\_07\_AmbulanceCertification\_1136\_1051  
m02\_CertificationConditionIndicator = "" rem set a code value  
val\_N\_No\_1073\_1053  
val\_Y\_Yes\_1073\_1053  
m03\_ConditionCode = "" rem set a code value  
val\_01\_Patientwasadmittedtoahospital\_1321\_1056  
val\_02\_Patientwasbedconfinedbeforetheambulanceservice\_1321\_1056  
val\_03\_Patientwasbedconfinedaftertheambulanceservice\_1321\_1056  
val\_04\_Patientwasmovedbystretcher\_1321\_1056  
val\_05\_Patientwasunconsciousorinshock\_1321\_1056  
val\_06\_Patientwastransportedinanemergencysituation\_1321\_1056  
val\_07\_Patienthadtobephysicallyrestrained\_1321\_1056  
val\_08\_Patienthadvisiblehemorrhaging\_1321\_1056  
val\_09\_Ambulanceservicewasmedicallynecessary\_1321\_1056  
val\_60\_TransportationWasTotheNearestFacility\_1321\_1056  
m04\_ConditionCode = ""  
m05\_ConditionCode = ""  
m06\_ConditionCode = ""  
m07\_ConditionCode = ""

#### Property Loop2300\_CRC\_01\_PatientConditionInformationVision

##### Element Members

m01\_CodeCategory = "" rem set a code value  
val\_E1\_SpectacleLenses\_1136\_1072  
val\_E2\_ContactLenses\_1136\_1072  
val\_E3\_SpectacleFrames\_1136\_1072  
m02\_CertificationConditionIndicator = "" rem set a code value  
val\_N\_No\_1073\_1076  
val\_Y\_Yes\_1073\_1076  
m03\_ConditionCode = "" rem set a code value  
  
val\_L1\_GeneralStandardof20Degreeor5DiopterSphereorCylinderChangeMet\_1321\_1079  
val\_L2\_ReplacementDuetoLossorTheft\_1321\_1079  
val\_L3\_ReplacementDuetoBreakageorDamage\_1321\_1079  
val\_L4\_ReplacementDuetoPatientPreference\_1321\_1079  
val\_L5\_ReplacementDuetoMedicalReason\_1321\_1079  
m04\_ConditionCode = ""  
m05\_ConditionCode = ""  
m06\_ConditionCode = ""  
m07\_ConditionCode = ""

#### Property Loop2300\_CRC\_02\_HomeboundIndicator

##### Element Members

m01\_CodeCategory = "" rem set a code value

```

        val_75_FunctionalLimitations_1136_1090
m02_CertificationConditionIndicator = "" rem set a code value
        val_Y_Yes_1073_1092
m03_ConditionCode = "" rem set a code value
        val_IH_IndependentatHome_1321_1094
m04_ConditionCode = ""
m05_ConditionCode = ""
m06_ConditionCode = ""
m07_ConditionCode = ""

```

#### Property Loop2300\_HI\_00\_HealthCareDiagnosisCode

##### Element Members

```

m0101_DiagnosisTypeCode = "" rem set a code value
        val_BK_PrincipalDiagnosis_1270_1102
m0102_DiagnosisCode = ""
m0201_DiagnosisTypeCode = "" rem set a code value
        val_BF_Diagnosis_1270_1111
m0202_DiagnosisCode = ""
m0301_DiagnosisTypeCode = "" rem set a code value
        val_BF_Diagnosis_1270_1120
m0302_DiagnosisCode = ""
m0401_DiagnosisTypeCode = "" rem set a code value
        val_BF_Diagnosis_1270_1129
m0402_DiagnosisCode = ""
m0501_DiagnosisTypeCode = "" rem set a code value
        val_BF_Diagnosis_1270_1138
m0502_DiagnosisCode = ""
m0601_DiagnosisTypeCode = "" rem set a code value
        val_BF_Diagnosis_1270_1147
m0602_DiagnosisCode = ""
m0701_DiagnosisTypeCode = "" rem set a code value
        val_BF_Diagnosis_1270_1156
m0702_DiagnosisCode = ""
m0801_DiagnosisTypeCode = "" rem set a code value
        val_BF_Diagnosis_1270_1165
m0802_DiagnosisCode = ""

```

#### Property Loop2300\_HCP\_00\_ClaimPricingRepricingInformation

##### Element Members

```

m01_PricingMethodology = "" rem set a code value
        val_00_ZeroPricingNotCoveredUnderContract_1473_1178
        val_01_PricedasBilledat100_1473_1178
        val_02_PricedattheStandardFeeSchedule_1473_1178
        val_03_PricedataContractualPercentage_1473_1178
        val_04_BundledPricing_1473_1178
        val_05_PeerReviewPricing_1473_1178
        val_07_FlatRatePricing_1473_1178
        val_08_CombinationPricing_1473_1178
        val_09_MaternityPricing_1473_1178
        val_10_OtherPricing_1473_1178
        val_11_LowerofCost_1473_1178
        val_12_RatioofCost_1473_1178

```

```

        val_13_CostReimbursed_1473_1178
        val_14_AdjustmentPricing_1473_1178
m02_RepricedAllowedAmount = ""
m03_RepricedSavingAmount = ""
m04_RepricingOrganizationIdentifier = ""
m05_RepricingPerDiemorFlatRateAmount = ""
m06_RepricedApprovedAmbulatoryPatientGroupCode = ""
m07_RepricedApprovedAmbulatoryPatientGroupAmount = ""
m13_RejectReasonCode = "" rem set a code value

val_T1_CannotIdentifyProviderasTPOThirdPartyOrganizationParticipant_901_1204

val_T2_CannotIdentifyPayerasTPOThirdPartyOrganizationParticipant_901_1204

val_T3_CannotIdentifyInsuredasTPOThirdPartyOrganizationParticipant_901_1204
    val_T4_PayerNameorIdentifierMissing_901_1204
    val_T5_CertificationInformationMissing_901_1204
    val_T6_Claimdoesnotcontainenoughinformationforrepricing_901_1204
m14_PolicyComplianceCode = "" rem set a code value
    val_1_ProcedureFollowedCompliance_1526_1211

val_2_NotFollowedCallNotMadeNonComplianceCallNotMade_1526_1211

val_3_NotMedicallyNecessaryNonComplianceNonMedicallyNecessary_1526_1211
    val_4_NotFollowedOtherNonComplianceOther_1526_1211
    val_5_EmergencyAdmittoNonNetworkHospital_1526_1211
m15_ExceptionCode = "" rem set a code value
    val_1_NonNetworkProfessionalProviderinNetworkHospital_1527_1217
    val_2_EmergencyCare_1527_1217
    val_3_ServicesorSpecialistnotinNetwork_1527_1217
    val_4_OutofServiceArea_1527_1217
    val_5_StateMandates_1527_1217
    val_6_Other_1527_1217

```

#### Property Loop2305\_CR7\_00\_HomeHealthCarePlanInformation

##### Element Members

```

m01_DisciplineTypeCode = "" rem set a code value
    val_AI_HomeHealthAide_921_1225
    val_MS_MedicalSocialWorker_921_1225
    val_OT_OccupationalTherapy_921_1225
    val_PT_PhysicalTherapy_921_1225
    val_SN_SkilledNursing_921_1225
    val_ST_SpeechTherapy_921_1225
m02_TotalVisitsRenderedCount = ""
m03_CertificationPeriodProjectedVisitCount = ""

```

#### Property Loop2305\_HSD\_00\_HealthCareServicesDelivery

##### Element Members

```

m01_Visits = "" rem set a code value
    val_VS_Visits_673_1235
m02_NumberofVisits = ""
m03_FrequencyPeriod = "" rem set a code value

```

```

    val_DA_Days_355_1238
    val_MO_Months_355_1238
    val_Q1_QuarterTime_355_1238
    val_WK_Week_355_1238
m04_FrequencyCount = ""
m05_DurationofVisitsUnits = "" rem set a code value
    val_7_Day_615_1244
    val_35_Week_615_1244
m06_DurationofVisitsNumberofUnits = ""
m07_ShipDeliveryorCalendarPatternCode = "" rem set a code value
    val_1_1stWeekoftheMonth_678_1248
    val_2_2ndWeekoftheMonth_678_1248
    val_3_3rdWeekoftheMonth_678_1248
    val_4_4thWeekoftheMonth_678_1248
    val_5_5thWeekoftheMonth_678_1248
    val_6_1st3rdWeeksoftheMonth_678_1248
    val_7_2nd4thWeeksoftheMonth_678_1248
    val_A_MondaythroughFriday_678_1248
    val_B_MondaythroughSaturday_678_1248
    val_C_MondaythroughSunday_678_1248
    val_D_Monday_678_1248
    val_E_Tuesday_678_1248
    val_F_Wednesday_678_1248
    val_G_Thursday_678_1248
    val_H_Friday_678_1248
    val_J_Saturday_678_1248
    val_K_Sunday_678_1248
    val_L_MondaythroughThursday_678_1248
    val_N_AsDirected_678_1248
    val_O_DailyMonthroughFri_678_1248
    val_S_OnceAnytimeMonthroughFri_678_1248
    val_SA_SundayMondayThursdayFridaySaturday_678_1248
    val_SB_TuesdaythroughSaturday_678_1248
    val_SC_SundayWednesdayThursdayFridaySaturday_678_1248
    val_SD_MondayWednesdayThursdayFridaySaturday_678_1248
    val_SG_TuesdaythroughFriday_678_1248
    val_SL_MondayTuesdayandThursday_678_1248
    val_SP_MondayTuesdayandFriday_678_1248
    val_SX_WednesdayandThursday_678_1248
    val_SY_MondayWednesdayandThursday_678_1248
    val_SZ_TuesdayThursdayandFriday_678_1248
    val_W_WheneverNecessary_678_1248
m08_DeliveryPatternTimeCode = "" rem set a code value
    val_D_AM_679_1281
    val_E_PM_679_1281
    val_F_AsDirected_679_1281

```

#### Property Loop2310A\_NM1\_00\_ReferringProviderName

##### Element Members

```

m01_EntityIdentifierCode = "" rem set a code value
    val_DN_ReferringProvider_98_1286
    val_P3_PrimaryCareProvider_98_1286
m02_EntityTypeQualifier = "" rem set a code value
    val_1_Person_1065_1289

```

```

        val_2_NonPersonEntity_1065_1289
m03_ReferringProviderLastName = ""
m04_ReferringProviderFirstName = ""
m05_ReferringProviderMiddleName = ""
m07_ReferringProviderNameSuffix = ""
m08_IdentificationCodeQualifier = "" rem set a code value
        val_24_EmployersIdentificationNumber_66_1297
        val_34_SocialSecurityNumber_66_1297
        val_XX_HealthCareFinancingAdministrationNationalProvider_66_1297
m09_ReferringProviderIdentifier = ""

```

**Property Loop2310A\_PRV\_00\_ReferringProviderSpecialtyInformation**

**Element Members**

```

m01_ProviderCode = "" rem set a code value
        val_RF_Referring_1221_1305
m02_ReferenceIdentificationQualifier = "" rem set a code value
        val_ZZ_MutuallyDefined_128_1307
m03_ProviderTaxonomyCode = ""

```

**Property Loop2310A\_N2\_00\_AdditionalReferringProviderNameInformation**

**Element Members**

```

m01_ReferringProviderNameAdditionalText = ""

```

**Property Loop2310A\_REF\_00\_ReferringProviderSecondaryIdentification**

**Element Members**

```

m01_ReferenceIdentificationQualifier = "" rem set a code value
        val_0B_StateLicenseNumber_128_1317
        val_1B_BlueShieldProviderNumber_128_1317
        val_1C_MedicareProviderNumber_128_1317
        val_1D_MedicaidProviderNumber_128_1317
        val_1G_ProviderUPINNumber_128_1317
        val_1H_CHAMPUSIdentificationNumber_128_1317
        val_EI_EmployersIdentificationNumber_128_1317
        val_G2_ProviderCommercialNumber_128_1317
        val_LU_LocationNumber_128_1317
        val_N5_ProviderPlanNetworkIdentificationNumber_128_1317
        val_SY_SocialSecurityNumber_128_1317
        val_X5_StateIndustrialAccidentProviderNumber_128_1317
m02_ReferringProviderSecondaryIdentifier = ""

```

**Property Loop2310B\_NM1\_00\_RenderingProviderName**

**Element Members**

```

m01_EntityIdentifierCode = "" rem set a code value
        val_82_RenderingProvider_98_1334
m02_EntityTypeQualifier = "" rem set a code value
        val_1_Person_1065_1336
        val_2_NonPersonEntity_1065_1336
m03_RenderingProviderLastOrganizationName = ""

```

```

m04_RenderingProviderFirstName = ""
m05_RenderingProviderMiddleName = ""
m07_RenderingProviderNameSuffix = ""
m08_IdentificationCodeQualifier = "" rem set a code value
    val_24_EmployersIdentificationNumber_66_1344
    val_34_SocialSecurityNumber_66_1344
    val_XX_HealthCareFinancingAdministrationNationalProvider_66_1344
m09_RenderingProviderIdentifier = ""

```

**Property Loop2310B\_PRV\_00\_RenderingProviderSpecialtyInformation**

**Element Members**

```

m01_ProviderCode = "" rem set a code value
    val_PE_Performing_1221_1352
m02_ReferenceIdentificationQualifier = "" rem set a code value
    val_ZZ_MutuallyDefined_128_1354
m03_ProviderTaxonomyCode = ""

```

**Property Loop2310B\_N2\_00\_AdditionalRenderingProviderNameInformation**

**Element Members**

```

m01_RenderingProviderNameAdditionalText = ""

```

**Property Loop2310B\_REF\_00\_RenderingProviderSecondaryIdentification**

**Element Members**

```

m01_ReferenceIdentificationQualifier = "" rem set a code value
    val_0B_StateLicenseNumber_128_1364
    val_1B_BlueShieldProviderNumber_128_1364
    val_1C_MedicareProviderNumber_128_1364
    val_1D_MedicaidProviderNumber_128_1364
    val_1G_ProviderUPINNumber_128_1364
    val_1H_CHAMPUSIdentificationNumber_128_1364
    val_EI_EmployersIdentificationNumber_128_1364
    val_G2_ProviderCommercialNumber_128_1364
    val_LU_LocationNumber_128_1364
    val_N5_ProviderPlanNetworkIdentificationNumber_128_1364
    val_SY_SocialSecurityNumber_128_1364
    val_X5_StateIndustrialAccidentProviderNumber_128_1364
m02_RenderingProviderSecondaryIdentifier = ""

```

**Property Loop2310C\_NM1\_00\_PurchasedServiceProviderName**

**Element Members**

```

m01_EntityIdentifierCode = "" rem set a code value
    val_QB_PurchaseServiceProvider_98_1381
m02_EntityTypeQualifier = "" rem set a code value
    val_1_Person_1065_1383
    val_2_NonPersonEntity_1065_1383
m08_IdentificationCodeQualifier = "" rem set a code value
    val_24_EmployersIdentificationNumber_66_1391
    val_34_SocialSecurityNumber_66_1391

```

val\_XX\_HealthCareFinancingAdministrationNationalProvider\_66\_1391  
 m09\_PurchasedServiceProviderIdentifier = ""

**Property Loop2310C\_REF\_00\_PurchasedServiceProviderSecondaryIdentification**

**Element Members**

m01\_ReferenceIdentificationQualifier = "" rem set a code value  
 val\_0B\_StateLicenseNumber\_128\_1399  
 val\_1A\_BlueCrossProviderNumber\_128\_1399  
 val\_1B\_BlueShieldProviderNumber\_128\_1399  
 val\_1C\_MedicareProviderNumber\_128\_1399  
 val\_1D\_MedicaidProviderNumber\_128\_1399  
 val\_1G\_ProviderUPINNumber\_128\_1399  
 val\_1H\_CHAMPUSIdentificationNumber\_128\_1399  
 val\_EI\_EmployersIdentificationNumber\_128\_1399  
 val\_G2\_ProviderCommercialNumber\_128\_1399  
 val\_LU\_LocationNumber\_128\_1399  
 val\_N5\_ProviderPlanNetworkIdentificationNumber\_128\_1399  
 val\_SY\_SocialSecurityNumber\_128\_1399  
 val\_U3\_UniqueSupplierIdentificationNumberUSIN\_128\_1399  
 val\_X5\_StateIndustrialAccidentProviderNumber\_128\_1399  
 m02\_PurchasedServiceProviderSecondaryIdentifier = ""

**Property Loop2310D\_NM1\_00\_ServiceFacilityLocation**

**Element Members**

m01\_EntityIdentifierCode = "" rem set a code value  
 val\_77\_ServiceLocation\_98\_1418  
 val\_FA\_Facility\_98\_1418  
 val\_LI\_IndependentLab\_98\_1418  
 val\_TL\_TestingLaboratory\_98\_1418  
 m02\_EntityTypeQualifier = "" rem set a code value  
 val\_2\_NonPersonEntity\_1065\_1423  
 m03\_LaboratoryorFacilityName = ""  
 m08\_IdentificationCodeQualifier = "" rem set a code value  
 val\_24\_EmployersIdentificationNumber\_66\_1430  
 val\_34\_SocialSecurityNumber\_66\_1430  
 val\_XX\_HealthCareFinancingAdministrationNationalProvider\_66\_1430  
 m09\_LaboratoryorFacilityPrimaryIdentifier = ""

**Property Loop2310D\_N2\_00\_AdditionalServiceFacilityLocationNameInformation**

**Element Members**

m01\_LaboratoryorFacilityNameAdditionalText = ""

**Property Loop2310D\_N3\_00\_ServiceFacilityLocationAddress**

**Element Members**

m01\_LaboratoryorFacilityAddressLine = ""  
 m02\_LaboratoryorFacilityAddressLine = ""

**Property Loop2310D\_N4\_00\_ServiceFacilityLocationCityStateZIP****Element Members**

m01\_LaboratoryorFacilityCityName = ""  
 m02\_LaboratoryorFacilityStateorProvinceCode = ""  
 m03\_LaboratoryorFacilityPostalZoneorZIPCode = ""  
 m04\_CountryCode = ""

**Property Loop2310D\_REF\_00\_ServiceFacilityLocationSecondaryIdentification****Element Members**

m01\_ReferenceIdentificationQualifier = "" rem set a code value  
 val\_0B\_StateLicenseNumber\_128\_1451  
 val\_1A\_BlueCrossProviderNumber\_128\_1451  
 val\_1B\_BlueShieldProviderNumber\_128\_1451  
 val\_1C\_MedicareProviderNumber\_128\_1451  
 val\_1D\_MedicaidProviderNumber\_128\_1451  
 val\_1G\_ProviderUPINNumber\_128\_1451  
 val\_1H\_CHAMPUSIdentificationNumber\_128\_1451  
 val\_G2\_ProviderCommercialNumber\_128\_1451  
 val\_LU\_LocationNumber\_128\_1451  
 val\_N5\_ProviderPlanNetworkIdentificationNumber\_128\_1451  
 val\_TJ\_FederalTaxpayersIdentificationNumber\_128\_1451  
 val\_X4\_ClinicalLaboratoryImprovementAmendmentNumber\_128\_1451  
 val\_X5\_StateIndustrialAccidentProviderNumber\_128\_1451  
 m02\_LaboratoryorFacilitySecondaryIdentifier = ""

**Property Loop2310E\_NM1\_00\_SupervisingProviderName****Element Members**

m01\_EntityIdentifierCode = "" rem set a code value  
 val\_DQ\_SupervisingPhysician\_98\_1469  
 m02\_EntityTypeQualifier = "" rem set a code value  
 val\_1\_Person\_1065\_1471  
 m03\_SupervisingProviderLastName = ""  
 m04\_SupervisingProviderFirstName = ""  
 m05\_SupervisingProviderMiddleName = ""  
 m07\_SupervisingProviderNameSuffix = ""  
 m08\_IdentificationCodeQualifier = "" rem set a code value  
 val\_24\_EmployersIdentificationNumber\_66\_1478  
 val\_34\_SocialSecurityNumber\_66\_1478  
 val\_XX\_HealthCareFinancingAdministrationNationalProvider\_66\_1478  
 m09\_SupervisingProviderIdentifier = ""

**Property Loop2310E\_N2\_00\_AdditionalSupervisingProviderNameInformation****Element Members**

m01\_SupervisingProviderNameAdditionalText = ""

**Property Loop2310E\_REF\_00\_SupervisingProviderSecondaryIdentification****Element Members**

m01\_ReferenceIdentificationQualifier = "" rem set a code value  
     val\_0B\_StateLicenseNumber\_128\_1489  
     val\_1B\_BlueShieldProviderNumber\_128\_1489  
     val\_1C\_MedicareProviderNumber\_128\_1489  
     val\_1D\_MedicaidProviderNumber\_128\_1489  
     val\_1G\_ProviderUPINNumber\_128\_1489  
     val\_1H\_CHAMPUSIdentificationNumber\_128\_1489  
     val\_EI\_EmployersIdentificationNumber\_128\_1489  
     val\_G2\_ProviderCommercialNumber\_128\_1489  
     val\_LU\_LocationNumber\_128\_1489  
     val\_N5\_ProviderPlanNetworkIdentificationNumber\_128\_1489  
     val\_SY\_SocialSecurityNumber\_128\_1489  
     val\_X5\_StateIndustrialAccidentProviderNumber\_128\_1489  
 m02\_SupervisingProviderSecondaryIdentifier = ""

### Property Loop2320\_SBR\_00\_OtherSubscriberInformation

#### Element Members

m01\_PayerResponsibilitySequenceNumberCode = "" rem set a code value  
     val\_P\_Primary\_1138\_1506  
     val\_S\_Secondary\_1138\_1506  
     val\_T\_Tertiary\_1138\_1506  
 m02\_IndividualRelationshipCode = "" rem set a code value  
     val\_01\_Spouse\_1069\_1510  
     val\_04\_GrandfatherorGrandmother\_1069\_1510  
     val\_05\_GrandsonorGranddaughter\_1069\_1510  
     val\_07\_NepheworNiece\_1069\_1510  
     val\_10\_FosterChild\_1069\_1510  
     val\_15\_Ward\_1069\_1510  
     val\_17\_StepsonorStepdaughter\_1069\_1510  
     val\_18\_Self\_1069\_1510  
     val\_19\_Child\_1069\_1510  
     val\_20\_Employee\_1069\_1510  
     val\_21\_Unknown\_1069\_1510  
     val\_22\_HandicappedDependent\_1069\_1510  
     val\_23\_SponsoredDependent\_1069\_1510  
     val\_24\_DependentofaMinorDependent\_1069\_1510  
     val\_29\_SignificantOther\_1069\_1510  
     val\_32\_Mother\_1069\_1510  
     val\_33\_Father\_1069\_1510  
     val\_36\_EmanipatedMinor\_1069\_1510  
     val\_39\_OrganDonor\_1069\_1510  
     val\_40\_CadaverDonor\_1069\_1510  
     val\_41\_InjuredPlaintiff\_1069\_1510  
     val\_43\_ChildWhereInsuredHasNoFinancialResponsibility\_1069\_1510  
     val\_53\_LifePartner\_1069\_1510  
     val\_G8\_OtherRelationship\_1069\_1510  
 m03\_InsuredGrouporPolicyNumber = ""  
 m04\_OtherInsuredGroupName = ""  
 m05\_InsuranceTypeCode = "" rem set a code value  
     val\_AP\_AutoInsurancePolicy\_1336\_1537  
     val\_C1\_Commercial\_1336\_1537  
     val\_CP\_MedicareConditionallyPrimary\_1336\_1537  
     val\_GP\_GroupPolicy\_1336\_1537  
     val\_HM\_HealthMaintenanceOrganizationHMO\_1336\_1537

```

val_IP_IndividualPolicy_1336_1537
val_LD_LongTermPolicy_1336_1537
val_LT_Litigation_1336_1537
val_MB_MedicarePartB_1336_1537
val_MC_Medicaid_1336_1537
val_MI_MedigapPartB_1336_1537
val_MP_MedicarePrimary_1336_1537
val_OT_Other_1336_1537
val_PP_PersonalPaymentCashNoInsurance_1336_1537
val_SP_SupplementalPolicy_1336_1537
m09_ClaimFilingIndicatorCode = "" rem set a code value
val_09_Selfpay_1032_1556
val_10_CentralCertification_1032_1556
val_11_OtherNonFederalPrograms_1032_1556
val_12_PreferredProviderOrganizationPPO_1032_1556
val_13_PointofServicePOS_1032_1556
val_14_ExclusiveProviderOrganizationEPO_1032_1556
val_15_IndemnityInsurance_1032_1556
val_16_HealthMaintenanceOrganizationHMOMedicareRisk_1032_1556
val_AM_AutomobileMedical_1032_1556
val_BL_BlueCrossBlueShield_1032_1556
val_CH_Champus_1032_1556
val_CI_CommercialInsuranceCo_1032_1556
val_DS_Disability_1032_1556
val_HM_HealthMaintenanceOrganization_1032_1556
val_LI_Liability_1032_1556
val_LM_LiabilityMedical_1032_1556
val_MB_MedicarePartB_1032_1556
val_MC_Medicaid_1032_1556
val_OF_OtherFederalProgram_1032_1556
val_TV_TitleV_1032_1556
val_VA_VeteranAdministrationPlan_1032_1556
val_WC_WorkersCompensationHealthClaim_1032_1556
val_ZZ_MutuallyDefined_1032_1556

```

#### Property Loop2320\_CAS\_00\_ClaimLevelAdjustments

##### Element Members

```

m01_ClaimAdjustmentGroupCode = "" rem set a code value
val_CO_ContractualObligations_1033_1581
val_CR_CorrectionandReversals_1033_1581
val_OA_Otheradjustments_1033_1581
val_PI_PayorInitiatedReductions_1033_1581
val_PR_PatientResponsibility_1033_1581
m02_AdjustmentReasonCode = ""
m03_AdjustmentAmount = ""
m04_AdjustmentQuantity = ""
m05_AdjustmentReasonCode = ""
m06_AdjustmentAmount = ""
m07_AdjustmentQuantity = ""
m08_AdjustmentReasonCode = ""
m09_AdjustmentAmount = ""
m10_AdjustmentQuantity = ""
m11_AdjustmentReasonCode = ""
m12_AdjustmentAmount = ""

```

m13\_AdjustmentQuantity = ""  
m14\_AdjustmentReasonCode = ""  
m15\_AdjustmentAmount = ""  
m16\_AdjustmentQuantity = ""  
m17\_AdjustmentReasonCode = ""  
m18\_AdjustmentAmount = ""  
m19\_AdjustmentQuantity = ""

**Property Loop2320\_AMT\_00\_CoordinationofBenefitsCOBPayerPaidAmount**

**Element Members**

m01\_AmountQualifierCode = "" rem set a code value  
    val\_D\_PayorAmountPaid\_522\_1606  
m02\_PayerPaidAmount = ""

**Property Loop2320\_AMT\_01\_CoordinationofBenefitsCOBApprovedAmount**

**Element Members**

m01\_AmountQualifierCode = "" rem set a code value  
    val\_AAE\_ApprovedAmount\_522\_1611  
m02\_PayerPaidAmount = ""

**Property Loop2320\_AMT\_02\_CoordinationofBenefitsCOBAllowedAmount**

**Element Members**

m01\_AmountQualifierCode = "" rem set a code value  
    val\_B6\_AllowedActual\_522\_1616  
m02\_PayerPaidAmount = ""

**Property Loop2320\_AMT\_03\_CoordinationofBenefitsCOBPatientResponsibilityAmount**

**Element Members**

m01\_AmountQualifierCode = "" rem set a code value  
    val\_F2\_PatientResponsibilityActual\_522\_1621  
m02\_PayerPaidAmount = ""

**Property Loop2320\_AMT\_04\_CoordinationofBenefitsCOBCoveredAmount**

**Element Members**

m01\_AmountQualifierCode = "" rem set a code value  
    val\_AU\_CoverageAmount\_522\_1626  
m02\_PayerPaidAmount = ""

**Property Loop2320\_AMT\_05\_CoordinationofBenefitsCOBDiscountAmount**

**Element Members**

m01\_AmountQualifierCode = "" rem set a code value  
    val\_D8\_DiscountAmount\_522\_1631  
m02\_PayerPaidAmount = ""

**Property Loop2320\_AMT\_06\_CoordinationofBenefitsCOBPerDayLimitAmount****Element Members**

m01\_AmountQualifierCode = "" rem set a code value  
     val\_DY\_PerDayLimit\_522\_1636  
 m02\_PayerPaidAmount = ""

**Property Loop2320\_AMT\_07\_CoordinationofBenefitsCOBPatientPaidAmount****Element Members**

m01\_AmountQualifierCode = "" rem set a code value  
     val\_F5\_PatientAmountPaid\_522\_1641  
 m02\_PayerPaidAmount = ""

**Property Loop2320\_AMT\_08\_CoordinationofBenefitsCOBTaxAmount****Element Members**

m01\_AmountQualifierCode = "" rem set a code value  
     val\_T\_Tax\_522\_1646  
 m02\_PayerPaidAmount = ""

**Property Loop2320\_AMT\_09\_CoordinationofBenefitsCOBTotalClaimBeforeTaxesAmount****Element Members**

m01\_AmountQualifierCode = "" rem set a code value  
     val\_T2\_TotalClaimBeforeTaxes\_522\_1651  
 m02\_PayerPaidAmount = ""

**Property Loop2320\_DMG\_00\_SubscriberDemographicInformation****Element Members**

m01\_DateTimePeriodFormatQualifier = "" rem set a code value  
     val\_D8\_DateExpressedinFormatCCYYMMDD\_1250\_1656  
 m02\_OtherInsuredBirthDate = ""  
 m03\_OtherInsuredGenderCode = "" rem set a code value  
     val\_F\_Female\_1068\_1659  
     val\_M\_Male\_1068\_1659  
     val\_U\_Unknown\_1068\_1659

**Property Loop2320\_OI\_00\_OtherInsuranceCoverageInformation****Element Members**

m03\_BenefitsAssignmentCertificationIndicator = "" rem set a code value  
     val\_N\_No\_1073\_1672  
     val\_Y\_Yes\_1073\_1672  
 m04\_PatientSignatureSourceCode = "" rem set a code value  
  
 val\_B\_SignedsignatureauthorizationformorformsforbothHCFA1500ClaimForm\_1351\_167  
 5  
     val\_C\_SignedHCFA1500ClaimFormonfile\_1351\_1675

val\_M\_SignedsignatureauthorizationformforHCFA1500ClaimFormblock13on\_1351\_1675  
 val\_P\_Signaturegeneratedbyproviderbecausethepatientwasnotphysically\_1351\_1675  
 val\_S\_SignedsignatureauthorizationformforHCFA1500ClaimFormblock12on\_1351\_1675  
 m06\_ReleaseofInformationCode = "" rem set a code value  
 val\_A\_AppropriateReleaseofInformationonFileatHealthCareServiceProvider\_1363\_1682  
 val\_I\_InformedConsenttoReleaseMedicalInformationforConditionsorDiagnoses\_1363\_16  
 82  
 val\_M\_TheProviderhasLimitedorRestrictedAbilitytoReleaseDataRelatedtoa\_1363\_1682  
     val\_N\_NoProviderisNotAllowedtoReleaseData\_1363\_1682  
     val\_O\_OnfileatPayororatPlanSponsor\_1363\_1682  
 val\_Y\_YesProviderhasaSignedStatementPermittingReleaseofMedicalBilling\_1363\_1682

**Property Loop2320\_MOA\_00\_MedicareOutpatientAdjudicationInformation**

**Element Members**

m01\_ReimbursementRate = ""  
 m02\_HCPCSPayableAmount = ""  
 m03\_RemarkCode = ""  
 m04\_RemarkCode = ""  
 m05\_RemarkCode = ""  
 m06\_RemarkCode = ""  
 m07\_RemarkCode = ""  
 m08\_EndStageRenalDiseasePaymentAmount = ""  
 m09\_NonPayableProfessionalComponentBilledAmount = ""

**Property Loop2330A\_NM1\_00\_OtherSubscriberName**

**Element Members**

m01\_EntityIdentifierCode = "" rem set a code value  
     val\_IL\_InsuredorSubscriber\_98\_1700  
 m02\_EntityTypeQualifier = "" rem set a code value  
     val\_1\_Person\_1065\_1702  
     val\_2\_NonPersonEntity\_1065\_1702  
 m03\_OtherInsuredLastName = ""  
 m04\_OtherInsuredFirstName = ""  
 m05\_OtherInsuredMiddleName = ""  
 m07\_OtherInsuredNameSuffix = ""  
 m08\_IdentificationCodeQualifier = "" rem set a code value  
     val\_MI\_MemberIdentificationNumber\_66\_1710  
     val\_ZZ\_MutuallyDefined\_66\_1710  
 m09\_OtherInsuredIdentifier = ""

**Property Loop2330A\_N2\_00\_AdditionalOtherSubscriberNameInformation**

**Element Members**

m01\_OtherInsuredAdditionalName = ""

**Property Loop2330A\_N3\_00\_OtherSubscriberAddress****Element Members**

m01\_OtherInsuredAddressLine = ""  
 m02\_OtherInsuredAddressLine = ""

**Property Loop2330A\_N4\_00\_OtherSubscriberCityStateZIPCode****Element Members**

m01\_OtherInsuredCityName = ""  
 m02\_OtherInsuredStateCode = ""  
 m03\_OtherInsuredPostalZoneorZIPCode = ""  
 m04\_CountryCode = ""

**Property Loop2330A\_REF\_00\_OtherSubscriberSecondaryIdentification****Element Members**

m01\_ReferenceIdentificationQualifier = "" rem set a code value  
 val\_1W\_MemberIdentificationNumber\_128\_1730  
 val\_23\_ClientNumber\_128\_1730  
 val\_IG\_InsurancePolicyNumber\_128\_1730  
 val\_SY\_SocialSecurityNumber\_128\_1730  
 m02\_OtherInsuredAdditionalIdentifier = ""

**Property Loop2330B\_NM1\_00\_OtherPayerName****Element Members**

m01\_EntityIdentifierCode = "" rem set a code value  
 val\_PR\_Payer\_98\_1739  
 m02\_EntityTypeQualifier = "" rem set a code value  
 val\_2\_NonPersonEntity\_1065\_1741  
 m03\_OtherPayerLastorOrganizationName = ""  
 m08\_IdentificationCodeQualifier = "" rem set a code value  
 val\_PI\_PayorIdentification\_66\_1748  
  
 val\_XV\_HealthCareFinancingAdministrationNationalPlanIDBIRequiredifthe\_66\_1748  
 m09\_OtherPayerPrimaryIdentifier = ""

**Property Loop2330B\_N2\_00\_AdditionalOtherPayerNameInformation****Element Members**

m01\_OtherPayerAdditionalNameText = ""

**Property Loop2330B\_PER\_00\_OtherPayerContactInformation****Element Members**

m01\_ContactFunctionCode = "" rem set a code value  
 val\_IC\_InformationContact\_366\_1758  
 m02\_OtherPayerContactName = ""

m03\_CommunicationNumberQualifier = "" rem set a code value  
     val\_ED\_ElectronicDataInterchangeAccessNumber\_365\_1761  
     val\_EM\_ElectronicMail\_365\_1761  
     val\_FX\_Facsimile\_365\_1761  
     val\_TE\_Telephone\_365\_1761  
 m04\_CommunicationNumber = ""  
 m05\_CommunicationNumberQualifier = "" rem set a code value  
     val\_ED\_ElectronicDataInterchangeAccessNumber\_365\_1767  
     val\_EM\_ElectronicMail\_365\_1767  
     val\_EX\_TelephoneExtension\_365\_1767  
     val\_FX\_Facsimile\_365\_1767  
     val\_TE\_Telephone\_365\_1767  
 m06\_CommunicationNumber = ""  
 m07\_CommunicationNumberQualifier = "" rem set a code value  
     val\_ED\_ElectronicDataInterchangeAccessNumber\_365\_1774  
     val\_EM\_ElectronicMail\_365\_1774  
     val\_EX\_TelephoneExtension\_365\_1774  
     val\_FX\_Facsimile\_365\_1774  
     val\_TE\_Telephone\_365\_1774  
 m08\_CommunicationNumber = ""

**Property Loop2330B\_DTP\_00\_ClaimAdjudicationDate**

**Element Members**

m01\_DateTimeQualifier = "" rem set a code value  
     val\_573\_DateClaimPaid\_374\_1783  
 m02\_DateTimePeriodFormatQualifier = "" rem set a code value  
     val\_D8\_DateExpressedInFormatCCYYMMDD\_1250\_1785  
 m03\_AdjudicationorPaymentDate = ""

**Property Loop2330B\_REF\_00\_OtherPayerSecondaryIdentifier**

**Element Members**

m01\_ReferenceIdentificationQualifier = "" rem set a code value  
     val\_2U\_PayerIdentificationNumber\_128\_1789  
     val\_F8\_OriginalReferenceNumber\_128\_1789  
     val\_FY\_ClaimOfficeNumber\_128\_1789  
  
     val\_NF\_NationalAssociationofInsuranceCommissionersNAICCode\_128\_1789  
     val\_TJ\_FederalTaxpayersIdentificationNumber\_128\_1789  
 m02\_OtherPayerSecondaryIdentifier = ""

**Property Loop2330B\_REF\_01\_OtherPayerPriorAuthorizationorReferralNumber**

**Element Members**

m01\_ReferenceIdentificationQualifier = "" rem set a code value  
     val\_9F\_ReferralNumber\_128\_1799  
     val\_G1\_PriorAuthorizationNumber\_128\_1799  
 m02\_OtherPayerSecondaryIdentifier = ""

**Property Loop2330B\_REF\_02\_OtherPayerClaimAdjustmentIndicator**

**Element Members**

m01\_ReferenceIdentificationQualifier = "" rem set a code value  
     val\_T4\_SignalCode\_128\_1806  
 m02\_OtherPayerSecondaryIdentifier = ""

**Property Loop2330C\_NM1\_00\_OtherPayerPatientInformation****Element Members**

m01\_EntityIdentifierCode = "" rem set a code value  
     val\_QC\_Patient\_98\_1812  
 m02\_EntityTypeQualifier = "" rem set a code value  
     val\_1\_Person\_1065\_1814  
 m03\_PatientLastName = ""  
 m08\_IdentificationCodeQualifier = "" rem set a code value  
     val\_MI\_MemberIdentificationNumber\_66\_1821  
 m09\_OtherPayerPatientPrimaryIdentifier = ""

**Property Loop2330C\_REF\_00\_OtherPayerPatientIdentification****Element Members**

m01\_ReferenceIdentificationQualifier = "" rem set a code value  
     val\_1W\_MemberIdentificationNumber\_128\_1827  
     val\_23\_ClientNumber\_128\_1827  
     val\_IG\_InsurancePolicyNumber\_128\_1827  
     val\_SY\_SocialSecurityNumber\_128\_1827  
 m02\_OtherPayerPatientSecondaryIdentifier = ""

**Property Loop2330D\_NM1\_00\_OtherPayerReferringProvider****Element Members**

m01\_EntityIdentifierCode = "" rem set a code value  
     val\_DN\_ReferringProvider\_98\_1836  
     val\_P3\_PrimaryCareProvider\_98\_1836  
 m02\_EntityTypeQualifier = "" rem set a code value  
     val\_1\_Person\_1065\_1839  
     val\_2\_NonPersonEntity\_1065\_1839  
 m03\_ReferringProviderLastName = ""

**Property Loop2330D\_REF\_00\_OtherPayerReferringProviderIdentification****Element Members**

m01\_ReferenceIdentificationQualifier = "" rem set a code value  
     val\_1B\_BlueShieldProviderNumber\_128\_1852  
     val\_1C\_MedicareProviderNumber\_128\_1852  
     val\_1D\_MedicaidProviderNumber\_128\_1852  
     val\_EI\_EmployersIdentificationNumber\_128\_1852  
     val\_G2\_ProviderCommercialNumber\_128\_1852  
     val\_LU\_LocationNumber\_128\_1852  
     val\_N5\_ProviderPlanNetworkIdentificationNumber\_128\_1852  
 m02\_OtherPayerReferringProviderIdentifier = ""

**Property Loop2330E\_NM1\_00\_OtherPayerRenderingProvider****Element Members**

m01\_EntityIdentifierCode = "" rem set a code value  
 val\_82\_RenderingProvider\_98\_1864  
 m02\_EntityTypeQualifier = "" rem set a code value  
 val\_1\_Person\_1065\_1866  
 val\_2\_NonPersonEntity\_1065\_1866  
 m03\_RenderingProviderLastorOrganizationName = ""

**Property Loop2330E\_REF\_00\_OtherPayerRenderingProviderSecondaryIdentification****Element Members**

m01\_ReferenceIdentificationQualifier = "" rem set a code value  
 val\_1B\_BlueShieldProviderNumber\_128\_1879  
 val\_1C\_MedicareProviderNumber\_128\_1879  
 val\_1D\_MedicaidProviderNumber\_128\_1879  
 val\_EI\_EmployersIdentificationNumber\_128\_1879  
 val\_G2\_ProviderCommercialNumber\_128\_1879  
 val\_LU\_LocationNumber\_128\_1879  
 val\_N5\_ProviderPlanNetworkIdentificationNumber\_128\_1879  
 m02\_OtherPayerRenderingProviderSecondaryIdentifier = ""

**Property Loop2330F\_NM1\_00\_OtherPayerPurchasedServiceProvider****Element Members**

m01\_EntityIdentifierCode = "" rem set a code value  
 val\_QB\_PurchaseServiceProvider\_98\_1891  
 m02\_EntityTypeQualifier = "" rem set a code value  
 val\_1\_Person\_1065\_1893  
 val\_2\_NonPersonEntity\_1065\_1893  
 m03\_PurchasedServiceProviderName = ""

**Property Loop2330F\_REF\_00\_OtherPayerPurchasedServiceProviderIdentification****Element Members**

m01\_ReferenceIdentificationQualifier = "" rem set a code value  
 val\_1A\_BlueCrossProviderNumber\_128\_1906  
 val\_1B\_BlueShieldProviderNumber\_128\_1906  
 val\_1C\_MedicareProviderNumber\_128\_1906  
 val\_1D\_MedicaidProviderNumber\_128\_1906  
 val\_EI\_EmployersIdentificationNumber\_128\_1906  
 val\_G2\_ProviderCommercialNumber\_128\_1906  
 val\_LU\_LocationNumber\_128\_1906  
 val\_N5\_ProviderPlanNetworkIdentificationNumber\_128\_1906  
 m02\_OtherPayerPurchasedServiceProviderIdentifier = ""

**Property Loop2330G\_NM1\_00\_OtherPayerServiceFacilityLocation****Element Members**

m01\_EntityIdentifierCode = "" rem set a code value  
 val\_77\_ServiceLocation\_98\_1919

val\_FA\_Facility\_98\_1919  
 val\_LI\_IndependentLab\_98\_1919  
 val\_TL\_TestingLaboratory\_98\_1919  
 m02\_EntityTypeQualifier = "" rem set a code value  
 val\_2\_NonPersonEntity\_1065\_1924  
 m03\_ServiceFacilityName = ""

**Property Loop2330G\_REF\_00\_OtherPayerServiceFacilityLocationIdentification**

**Element Members**

m01\_ReferenceIdentificationQualifier = "" rem set a code value  
 val\_1A\_BlueCrossProviderNumber\_128\_1936  
 val\_1B\_BlueShieldProviderNumber\_128\_1936  
 val\_1C\_MedicareProviderNumber\_128\_1936  
 val\_1D\_MedicaidProviderNumber\_128\_1936  
 val\_G2\_ProviderCommercialNumber\_128\_1936  
 val\_LU\_LocationNumber\_128\_1936  
 val\_N5\_ProviderPlanNetworkIdentificationNumber\_128\_1936  
 m02\_OtherPayerServiceFacilityLocationIdentifier = ""

**Property Loop2330H\_NM1\_00\_OtherPayerSupervisingProvider**

**Element Members**

m01\_EntityIdentifierCode = "" rem set a code value  
 val\_DQ\_SupervisingPhysician\_98\_1948  
 m02\_EntityTypeQualifier = "" rem set a code value  
 val\_1\_Person\_1065\_1950  
 m03\_SupervisingProviderLastName = ""

**Property Loop2330H\_REF\_00\_OtherPayerSupervisingProviderIdentification**

**Element Members**

m01\_ReferenceIdentificationQualifier = "" rem set a code value  
 val\_1B\_BlueShieldProviderNumber\_128\_1962  
 val\_1C\_MedicareProviderNumber\_128\_1962  
 val\_1D\_MedicaidProviderNumber\_128\_1962  
 val\_EI\_EmployersIdentificationNumber\_128\_1962  
 val\_G2\_ProviderCommercialNumber\_128\_1962  
 val\_N5\_ProviderPlanNetworkIdentificationNumber\_128\_1962  
 m02\_OtherPayerSupervisingProviderIdentifier = ""

**Property Loop2400\_LX\_00\_ServiceLine**

**Element Members**

m01\_AssignedNumber = ""

**Property Loop2400\_SV1\_00\_ProfessionalService**

**Element Members**

m0101\_ProductorServiceIDQualifier = "" rem set a code value

val\_HC\_HealthCareFinancingAdministrationCommonProceduralCodingSystemHCPCS\_235\_1976

val\_IV\_HomeInfusionEDICoalitionHIECProductServiceCode\_235\_1976

val\_N1\_NationalDrugCodein442Format\_235\_1976

val\_N2\_NationalDrugCodein532Format\_235\_1976

val\_N3\_NationalDrugCodein541Format\_235\_1976

val\_N4\_NationalDrugCodein542Format\_235\_1976

val\_ZZ\_MutuallyDefined\_235\_1976

m0102\_ProcedureCode = ""

m0103\_ProcedureModifier = ""

m0104\_ProcedureModifier = ""

m0105\_ProcedureModifier = ""

m0106\_ProcedureModifier = ""

m02\_LineItemChargeAmount = ""

m03\_UnitorBasisforMeasurementCode = "" rem set a code value

val\_F2\_InternationalUnit\_355\_1991

val\_MJ\_Minutes\_355\_1991

val\_UN\_Unit\_355\_1991

m04\_ServiceUnitCount = ""

m05\_PlaceofServiceCode = ""

m0701\_DiagnosisCodePointer = ""

m0702\_DiagnosisCodePointer = ""

m0703\_DiagnosisCodePointer = ""

m0704\_DiagnosisCodePointer = ""

m09\_EmergencyIndicator = "" rem set a code value

val\_N\_No\_1073\_2004

val\_Y\_Yes\_1073\_2004

m11\_EPSDTIndicator = "" rem set a code value

val\_Y\_Yes\_1073\_2008

m12\_FamilyPlanningIndicator = "" rem set a code value

val\_Y\_Yes\_1073\_2010

m15\_CoPayStatusCode = "" rem set a code value

val\_0\_Copayexempt\_1327\_2014

**Property Loop2400\_SV4\_00\_PrescriptionNumber**

**Element Members**

m01\_PrescriptionNumber = ""

**Property Loop2400\_PWK\_00\_DMERCCMNIndicator**

**Element Members**

m01\_AttachmentReportTypeCode = "" rem set a code value

val\_CT\_Certification\_755\_2042

m02\_AttachmentTransmissionCode = "" rem set a code value

val\_AB\_PreviouslySubmittedtoPayer\_756\_2044

val\_AD\_CertificationIncludedinthisClaim\_756\_2044

val\_AF\_NarrativeSegmentIncludedinthisClaim\_756\_2044

val\_AG\_NoDocumentationisRequired\_756\_2044

val\_NS\_NotSpecified\_756\_2044

**Property Loop2400\_CR1\_00\_AmbulanceTransportInformation**

**Element Members**

m01\_UnitBasisforMeasurementCode = "" rem set a code value  
     val\_LB\_Pound\_355\_2058  
 m02\_PatientWeight = ""  
 m03\_AmbulanceTransportCode = "" rem set a code value  
     val\_I\_InitialTrip\_1316\_2061  
     val\_R\_ReturnTrip\_1316\_2061  
     val\_T\_TransferTrip\_1316\_2061  
     val\_X\_RoundTrip\_1316\_2061  
 m04\_AmbulanceTransportReasonCode = "" rem set a code value  
  
 val\_A\_Patientwastransportedtonearestfacilityforcareofsymptoms\_1317\_2066  
  
 val\_B\_Patientwastransportedforthebenefitofapreferreddphysician\_1317\_2066  
  
 val\_C\_Patientwastransportedforthenearnessoffamilymembers\_1317\_2066  
  
 val\_D\_Patientwastransportedforthecareofaspecialistorforavailabilityof\_1317\_2066  
     val\_E\_PatientTransferredtoRehabilitationFacility\_1317\_2066  
 m05\_UnitBasisforMeasurementCode = "" rem set a code value  
     val\_DH\_Miles\_355\_2072  
 m06\_TransportDistance = ""  
 m09\_RoundTripPurposeDescription = ""  
 m10\_StretcherPurposeDescription = ""

**Property Loop2400\_CR2\_00\_SpinalManipulationServiceInformation****Element Members**

m01\_TreatmentSeriesNumber = ""  
 m02\_TreatmentCount = ""  
 m03\_SubluxationLevelCode = "" rem set a code value  
     val\_C1\_Cervical1\_1367\_2082  
     val\_C2\_Cervical2\_1367\_2082  
     val\_C3\_Cervical3\_1367\_2082  
     val\_C4\_Cervical4\_1367\_2082  
     val\_C5\_Cervical5\_1367\_2082  
     val\_C6\_Cervical6\_1367\_2082  
     val\_C7\_Cervical7\_1367\_2082  
     val\_CO\_Coccyx\_1367\_2082  
     val\_IL\_Ilium\_1367\_2082  
     val\_L1\_Lumbar1\_1367\_2082  
     val\_L2\_Lumbar2\_1367\_2082  
     val\_L3\_Lumbar3\_1367\_2082  
     val\_L4\_Lumbar4\_1367\_2082  
     val\_L5\_Lumbar5\_1367\_2082  
     val\_OC\_Occiput\_1367\_2082  
     val\_SA\_Sacrum\_1367\_2082  
     val\_T1\_Thoracic1\_1367\_2082  
     val\_T10\_Thoracic10\_1367\_2082  
     val\_T11\_Thoracic11\_1367\_2082  
     val\_T12\_Thoracic12\_1367\_2082  
     val\_T2\_Thoracic2\_1367\_2082  
     val\_T3\_Thoracic3\_1367\_2082  
     val\_T4\_Thoracic4\_1367\_2082

```
val_T5_Thoracic5_1367_2082
val_T6_Thoracic6_1367_2082
val_T7_Thoracic7_1367_2082
val_T8_Thoracic8_1367_2082
val_T9_Thoracic9_1367_2082
m04_SubluxationLevelCode = "" rem set a code value
val_C1_Cervical1_1367_2111
val_C2_Cervical2_1367_2111
val_C3_Cervical3_1367_2111
val_C4_Cervical4_1367_2111
val_C5_Cervical5_1367_2111
val_C6_Cervical6_1367_2111
val_C7_Cervical7_1367_2111
val_CO_Coccyx_1367_2111
val_IL_Ilium_1367_2111
val_L1_Lumbar1_1367_2111
val_L2_Lumbar2_1367_2111
val_L3_Lumbar3_1367_2111
val_L4_Lumbar4_1367_2111
val_L5_Lumbar5_1367_2111
val_OC_Occiput_1367_2111
val_SA_Sacrum_1367_2111
val_T1_Thoracic1_1367_2111
val_T10_Thoracic10_1367_2111
val_T11_Thoracic11_1367_2111
val_T12_Thoracic12_1367_2111
val_T2_Thoracic2_1367_2111
val_T3_Thoracic3_1367_2111
val_T4_Thoracic4_1367_2111
val_T5_Thoracic5_1367_2111
val_T6_Thoracic6_1367_2111
val_T7_Thoracic7_1367_2111
val_T8_Thoracic8_1367_2111
val_T9_Thoracic9_1367_2111
m05_UnitorBasisforMeasurementCode = "" rem set a code value
val_DA_Days_355_2140
val_MO_Months_355_2140
val_WK_Week_355_2140
val_YR_Years_355_2140
m06_TreatmentPeriodCount = ""
m07_MonthlyTreatmentCount = ""
m08_PatientConditionCode = "" rem set a code value
val_A_AcuteCondition_1342_2147
val_C_ChronicCondition_1342_2147
val_D_Nonacute_1342_2147
val_E_NonLifeThreatening_1342_2147
val_F_Routine_1342_2147
val_G_Symptomatic_1342_2147
val_M_AcuteManifestationofaChronicCondition_1342_2147
m09_ComplicationIndicator = "" rem set a code value
val_N_No_1073_2155
val_Y_Yes_1073_2155
m10_PatientConditionDescription = ""
m11_PatientConditionDescription = ""
m12_XrayAvailabilityIndicator = "" rem set a code value
val_N_No_1073_2160
```

val\_Y\_Yes\_1073\_2160

**Property Loop2400\_CR3\_00\_DurableMedicalEquipmentCertification**

**Element Members**

m01\_CertificationTypeCode = "" rem set a code value  
 val\_I\_Initial\_1322\_2164  
 val\_R\_Renewal\_1322\_2164  
 val\_S\_Revised\_1322\_2164  
 m02\_UnitorBasisforMeasurementCode = "" rem set a code value  
 val\_MO\_Months\_355\_2168  
 m03\_DurableMedicalEquipmentDuration = ""

**Property Loop2400\_CR5\_00\_HomeOxygenTherapyInformation**

**Element Members**

m01\_CertificationTypeCode = "" rem set a code value  
 val\_I\_Initial\_1322\_2174  
 val\_R\_Renewal\_1322\_2174  
 val\_S\_Revised\_1322\_2174  
 m02\_TreatmentPeriodCount = ""  
 m10\_ArterialBloodGasQuantity = ""  
 m11\_OxygenSaturationQuantity = ""  
 m12\_OxygenTestConditionCode = "" rem set a code value  
 val\_E\_Exercising\_1349\_2188  
 val\_R\_Atrestonroomair\_1349\_2188  
 val\_S\_Sleeping\_1349\_2188  
 m13\_OxygenTestFindingsCode = "" rem set a code value  
 val\_1\_Dependentedemasuggestingcongestiveheartfailure\_1350\_2192  
 m14\_OxygenTestFindingsCode = "" rem set a code value  
 val\_2\_PPulmonaleonElectrocardiogramEKG\_1350\_2194  
 m15\_OxygenTestFindingsCode = "" rem set a code value  
 val\_3\_Erythrocythemiawithahematocritgreaterthan56percent\_1350\_2196

**Property Loop2400\_CRC\_00\_AmbulanceCertification**

**Element Members**

m01\_CodeCategory = "" rem set a code value  
 val\_07\_AmbulanceCertification\_1136\_2202  
 m02\_CertificationConditionIndicator = "" rem set a code value  
 val\_N\_No\_1073\_2204  
 val\_Y\_Yes\_1073\_2204  
 m03\_ConditionCode = "" rem set a code value  
 val\_01\_Patientwasadmittedtoahospital\_1321\_2207  
 val\_02\_Patientwasbedconfinedbeforetheambulanceservice\_1321\_2207  
 val\_03\_Patientwasbedconfinedaftertheambulanceservice\_1321\_2207  
 val\_04\_Patientwasmovedbystretcher\_1321\_2207  
 val\_05\_Patientwasunconsciousorinshock\_1321\_2207  
 val\_06\_Patientwastransportedinanemergencysituation\_1321\_2207  
 val\_07\_Patienthadtobephysicallyrestrained\_1321\_2207  
 val\_08\_Patienthadvisiblehemorrhaging\_1321\_2207  
 val\_09\_Ambulanceservicewasmedicallynecessary\_1321\_2207  
 val\_60\_TransportationWasTotheNearestFacility\_1321\_2207

m04\_ConditionCode = ""  
 m05\_ConditionCode = ""  
 m06\_ConditionCode = ""  
 m07\_ConditionCode = ""

**Property Loop2400\_CRC\_01\_HospiceEmployeeIndicator**

**Element Members**

m01\_CodeCategory = "" rem set a code value  
     val\_70\_Hospice\_1136\_2223  
 m02\_CertificationConditionIndicator = "" rem set a code value  
     val\_N\_No\_1073\_2225  
     val\_Y\_Yes\_1073\_2225  
 m03\_ConditionCode = "" rem set a code value  
     val\_65\_Open\_1321\_2228  
 m04\_ConditionCode = ""  
 m05\_ConditionCode = ""  
 m06\_ConditionCode = ""  
 m07\_ConditionCode = ""

**Property Loop2400\_CRC\_02\_DMERCCConditionIndicator**

**Element Members**

m01\_CodeCategory = "" rem set a code value  
     val\_09\_DurableMedicalEquipmentCertification\_1136\_2235  
     val\_11\_OxygenTherapyCertification\_1136\_2235  
 m02\_CertificationConditionIndicator = "" rem set a code value  
     val\_N\_No\_1073\_2238  
     val\_Y\_Yes\_1073\_2238  
 m03\_ConditionCode = "" rem set a code value  
     val\_37\_Oxygendeliveryequipmentisstationary\_1321\_2241  
  
 val\_38\_Certificationsignedbythephysicianisonfileatthesuppliersoffice\_1321\_2241  
     val\_AL\_AmbulationLimitations\_1321\_2241  
     val\_P1\_PatientwasDischargedfromtheFirstFacility\_1321\_2241  
     val\_ZV\_ReplacementItem\_1321\_2241  
 m04\_ConditionCode = ""  
 m05\_ConditionCode = ""  
 m06\_ConditionCode = ""  
 m07\_ConditionCode = ""

**Property Loop2400\_DTP\_00\_DateServiceDate**

**Element Members**

m01\_DateTimeQualifier = "" rem set a code value  
     val\_472\_Service\_374\_2252  
 m02\_DateTimePeriodFormatQualifier = "" rem set a code value  
     val\_D8\_DateExpressedinFormatCCYYMMDD\_1250\_2254  
  
 val\_RD8\_RangeofDatesExpressedinFormatCCYYMMDDCCYYMMDD\_1250\_2254  
 m03\_ServiceDate = ""

**Property Loop2400\_DTP\_01\_DateCertificationRevisionDate****Element Members**

m01\_DateTimeQualifier = "" rem set a code value  
     val\_607\_CertificationRevision\_374\_2259  
 m02\_DateTimePeriodFormatQualifier = "" rem set a code value  
     val\_D8\_DateExpressedinFormatCCYYMMDD\_1250\_2261  
 m03\_ServiceDate = ""

**Property Loop2400\_DTP\_02\_DateReferralDate****Element Members**

m01\_DateTimeQualifier = "" rem set a code value  
     val\_330\_ReferralDate\_374\_2265  
 m02\_DateTimePeriodFormatQualifier = "" rem set a code value  
     val\_D8\_DateExpressedinFormatCCYYMMDD\_1250\_2267  
 m03\_ServiceDate = ""

**Property Loop2400\_DTP\_03\_DateBeginTherapyDate****Element Members**

m01\_DateTimeQualifier = "" rem set a code value  
     val\_463\_BeginTherapy\_374\_2271  
 m02\_DateTimePeriodFormatQualifier = "" rem set a code value  
     val\_D8\_DateExpressedinFormatCCYYMMDD\_1250\_2273  
 m03\_ServiceDate = ""

**Property Loop2400\_DTP\_04\_DateLastCertificationDate****Element Members**

m01\_DateTimeQualifier = "" rem set a code value  
     val\_461\_LastCertification\_374\_2277  
 m02\_DateTimePeriodFormatQualifier = "" rem set a code value  
     val\_D8\_DateExpressedinFormatCCYYMMDD\_1250\_2279  
 m03\_ServiceDate = ""

**Property Loop2400\_DTP\_05\_DateOrderDate****Element Members**

m01\_DateTimeQualifier = "" rem set a code value  
     val\_938\_Order\_374\_2283  
 m02\_DateTimePeriodFormatQualifier = "" rem set a code value  
     val\_D8\_DateExpressedinFormatCCYYMMDD\_1250\_2285  
 m03\_ServiceDate = ""

**Property Loop2400\_DTP\_06\_DateDateLastSeen****Element Members**

m01\_DateTimeQualifier = "" rem set a code value  
     val\_304\_LatestVisitorConsultation\_374\_2289  
 m02\_DateTimePeriodFormatQualifier = "" rem set a code value

```

        val_D8_DateExpressedinFormatCCYYMMDD_1250_2291
m03_ServiceDate = ""

```

**Property Loop2400\_DTP\_07\_DateTest**

**Element Members**

```

m01_DateTimeQualifier = "" rem set a code value
        val_738_MostRecentHemoglobinorHematocritorBoth_374_2295
        val_739_MostRecentSerumCreatine_374_2295
m02_DateTimePeriodFormatQualifier = "" rem set a code value
        val_D8_DateExpressedinFormatCCYYMMDD_1250_2298
m03_ServiceDate = ""

```

**Property Loop2400\_DTP\_08\_DateOxygenSaturationArterialBloodGasTest**

**Element Members**

```

m01_DateTimeQualifier = "" rem set a code value
        val_119_TestPerformed_374_2302
        val_480_ArterialBloodGasTest_374_2302
        val_481_OxygenSaturationTest_374_2302
m02_DateTimePeriodFormatQualifier = "" rem set a code value
        val_D8_DateExpressedinFormatCCYYMMDD_1250_2306
m03_ServiceDate = ""

```

**Property Loop2400\_DTP\_09\_DateShipped**

**Element Members**

```

m01_DateTimeQualifier = "" rem set a code value
        val_011_Shipped_374_2310
m02_DateTimePeriodFormatQualifier = "" rem set a code value
        val_D8_DateExpressedinFormatCCYYMMDD_1250_2312
m03_ServiceDate = ""

```

**Property Loop2400\_DTP\_10\_DateOnsetofCurrentSymptomIllness**

**Element Members**

```

m01_DateTimeQualifier = "" rem set a code value
        val_431_OnsetofCurrentSymptomsorIllness_374_2316
m02_DateTimePeriodFormatQualifier = "" rem set a code value
        val_D8_DateExpressedinFormatCCYYMMDD_1250_2318
m03_ServiceDate = ""

```

**Property Loop2400\_DTP\_11\_DateLastXray**

**Element Members**

```

m01_DateTimeQualifier = "" rem set a code value
        val_455_LastXRay_374_2322
m02_DateTimePeriodFormatQualifier = "" rem set a code value
        val_D8_DateExpressedinFormatCCYYMMDD_1250_2324
m03_ServiceDate = ""

```

**Property Loop2400\_DTP\_12\_DateAcuteManifestation****Element Members**

m01\_DateTimeQualifier = "" rem set a code value  
     val\_453\_AcuteManifestationofaChronicCondition\_374\_2328  
 m02\_DateTimePeriodFormatQualifier = "" rem set a code value  
     val\_D8\_DateExpressedinFormatCCYYMMDD\_1250\_2330  
 m03\_ServiceDate = ""

**Property Loop2400\_DTP\_13\_DateInitialTreatment****Element Members**

m01\_DateTimeQualifier = "" rem set a code value  
     val\_454\_InitialTreatment\_374\_2334  
 m02\_DateTimePeriodFormatQualifier = "" rem set a code value  
     val\_D8\_DateExpressedinFormatCCYYMMDD\_1250\_2336  
 m03\_ServiceDate = ""

**Property Loop2400\_DTP\_14\_DateSimilarIllnessSymptomOnset****Element Members**

m01\_DateTimeQualifier = "" rem set a code value  
     val\_438\_OnsetofSimilarSymptomsorIllness\_374\_2340  
 m02\_DateTimePeriodFormatQualifier = "" rem set a code value  
     val\_D8\_DateExpressedinFormatCCYYMMDD\_1250\_2342  
 m03\_ServiceDate = ""

**Property Loop2400\_QTY\_00\_AnesthesiaModifyingUnits****Element Members**

m01\_QuantityQualifier = "" rem set a code value  
     val\_BF\_AgeModifyingUnits\_673\_2346  
     val\_EC\_UseofExtracorporealCirculation\_673\_2346  
     val\_EM\_EmergencyModifyingUnits\_673\_2346  
     val\_HM\_UseofHypothermia\_673\_2346  
     val\_HO\_UseofHypotension\_673\_2346  
     val\_HP\_UseofHyperbaricPressurization\_673\_2346  
     val\_P3\_PhysicalStatusIII\_673\_2346  
     val\_P4\_PhysicalStatusIV\_673\_2346  
     val\_P5\_PhysicalStatusV\_673\_2346  
     val\_SG\_SwanGanz\_673\_2346  
 m02\_AnesthesiaModifyingUnits = ""

**Property Loop2400\_MEA\_00\_TestResult****Element Members**

m01\_MeasurementReferenceIdentificationCode = "" rem set a code value  
     val\_OG\_Original\_737\_2361  
     val\_TR\_TestResults\_737\_2361  
 m02\_MeasurementQualifier = "" rem set a code value  
     val\_CON\_Concentration\_738\_2364

```

val_GRA_GasTestRate_738_2364
val_HT_Height_738_2364
val_R1_Hemoglobin_738_2364
val_R2_Hematocrit_738_2364
val_R3_EpoetinStartingDosage_738_2364
val_R4_Creatin_738_2364
val_ZO_Oxygen_738_2364
m03_TestResults = ""

```

**Property Loop2400\_CN1\_00\_ContractInformation**

**Element Members**

```

m01_ContractTypeCode = "" rem set a code value
val_01_DiagnosisRelatedGroupDRG_1166_2382
val_02_PerDiem_1166_2382
val_03_VariablePerDiem_1166_2382
val_04_Flat_1166_2382
val_05_Capitated_1166_2382
val_06_Percent_1166_2382
val_09_Other_1166_2382
m02_ContractAmount = ""
m03_ContractPercentage = ""
m04_ContractCode = ""
m05_TermsDiscountPercentage = ""
m06_ContractVersionIdentifier = ""

```

**Property Loop2400\_REF\_00\_RepricedLineItemReferenceNumber**

**Element Members**

```

m01_ReferenceIdentificationQualifier = "" rem set a code value
val_9B_RepricedLineItemReferenceNumber_128_2396
m02_RepricedLineItemReferenceNumber = ""

```

**Property Loop2400\_REF\_01\_AdjustedRepricedLineItemReferenceNumber**

**Element Members**

```

m01_ReferenceIdentificationQualifier = "" rem set a code value
val_9D_AdjustedRepricedLineItemReferenceNumber_128_2402
m02_RepricedLineItemReferenceNumber = ""

```

**Property Loop2400\_REF\_02\_PriorAuthorizationorReferralNumber**

**Element Members**

```

m01_ReferenceIdentificationQualifier = "" rem set a code value
val_9F_ReferralNumber_128_2408
val_G1_PriorAuthorizationNumber_128_2408
m02_RepricedLineItemReferenceNumber = ""

```

**Property Loop2400\_REF\_03\_LineItemControlNumber**

**Element Members**

m01\_ReferencelDentificationQualifier = "" rem set a code value  
val\_6R\_ProviderControlNumber\_128\_2415  
m02\_RepricedLinItemReferenceNumber = ""

**Property Loop2400\_REF\_04\_MammographyCertificationNumber**

**Element Members**

m01\_ReferencelDentificationQualifier = "" rem set a code value  
val\_EW\_MammographyCertificationNumber\_128\_2421  
m02\_RepricedLinItemReferenceNumber = ""

**Property Loop2400\_REF\_05\_ClinicalLaboratoryImprovementAmendmentCLIAIdentification**

**Element Members**

m01\_ReferencelDentificationQualifier = "" rem set a code value  
val\_X4\_ClinicalLaboratoryImprovementAmendmentNumber\_128\_2427  
m02\_RepricedLinItemReferenceNumber = ""

**Property**

**Loop2400\_REF\_06\_ReferringClinicalLaboratoryImprovementAmendmentCLIAFacilityIdentification**

**Element Members**

m01\_ReferencelDentificationQualifier = "" rem set a code value  
val\_F4\_FacilityCertificationNumber\_128\_2433  
m02\_RepricedLinItemReferenceNumber = ""

**Property Loop2400\_REF\_07\_ImmunizationBatchNumber**

**Element Members**

m01\_ReferencelDentificationQualifier = "" rem set a code value  
val\_BT\_BatchNumber\_128\_2439  
m02\_RepricedLinItemReferenceNumber = ""

**Property Loop2400\_REF\_08\_AmbulatoryPatientGroupAPG**

**Element Members**

m01\_ReferencelDentificationQualifier = "" rem set a code value  
val\_1S\_AmbulatoryPatientGroupAPGNumber\_128\_2445  
m02\_RepricedLinItemReferenceNumber = ""

**Property Loop2400\_REF\_09\_OxygenFlowRate**

**Element Members**

m01\_ReferencelDentificationQualifier = "" rem set a code value  
val\_TP\_TestSpecificationNumber\_128\_2451  
m02\_RepricedLinItemReferenceNumber = ""

**Property Loop2400\_REF\_10\_UniversalProductNumberUPN**

**Element Members**

m01\_ReferenceIdentificationQualifier = "" rem set a code value  
    val\_OZ\_ProductNumber\_128\_2457  
    val\_VP\_VendorProductNumber\_128\_2457  
m02\_RepricedLineItemReferenceNumber = ""

**Property Loop2400\_AMT\_00\_SalesTaxAmount**

**Element Members**

m01\_AmountQualifierCode = "" rem set a code value  
    val\_T\_Tax\_522\_2464  
m02\_SalesTaxAmount = ""

**Property Loop2400\_AMT\_01\_ApprovedAmount**

**Element Members**

m01\_AmountQualifierCode = "" rem set a code value  
    val\_AAE\_ApprovedAmount\_522\_2469  
m02\_SalesTaxAmount = ""

**Property Loop2400\_AMT\_02\_PostageClaimedAmount**

**Element Members**

m01\_AmountQualifierCode = "" rem set a code value  
    val\_F4\_PostageClaimed\_522\_2474  
m02\_SalesTaxAmount = ""

**Property Loop2400\_K3\_00\_FileInformation**

**Element Members**

m01\_FixedFormatInformation = ""

**Property Loop2400\_NTE\_00\_LineNote**

**Element Members**

m01\_NoteReferenceCode = "" rem set a code value  
    val\_ADD\_AdditionalInformation\_363\_2483  
    val\_DCP\_GoalsRehabilitationPotentialorDischargePlans\_363\_2483  
    val\_PMT\_Payment\_363\_2483  
    val\_TPO\_ThirdPartyOrganizationNotes\_363\_2483  
m02\_LineNoteText = ""

**Property Loop2400\_PS1\_00\_PurchasedServiceInformation**

**Element Members**

m01\_PurchasedServiceProviderIdentifier = ""  
m02\_PurchasedServiceChargeAmount = ""

**Property Loop2400\_HSD\_00\_HealthCareServicesDelivery**

**Element Members**

```

m01_Visits = "" rem set a code value
    val_VS_Visits_673_2494
m02_NumberofVisits = ""
m03_FrequencyPeriod = "" rem set a code value
    val_DA_Days_355_2497
    val_MO_Months_355_2497
    val_Q1_QuarterTime_355_2497
    val_WK_Week_355_2497
m04_FrequencyCount = ""
m05_DurationofVisitsUnits = "" rem set a code value
    val_7_Day_615_2503
    val_34_Month_615_2503
    val_35_Week_615_2503
m06_DurationofVisitsNumberofUnits = ""
m07_ShipDeliveryorCalendarPatternCode = "" rem set a code value
    val_1_1stWeekoftheMonth_678_2508
    val_2_2ndWeekoftheMonth_678_2508
    val_3_3rdWeekoftheMonth_678_2508
    val_4_4thWeekoftheMonth_678_2508
    val_5_5thWeekoftheMonth_678_2508
    val_6_1st3rdWeeksoftheMonth_678_2508
    val_7_2nd4thWeeksoftheMonth_678_2508
    val_A_MondaythroughFriday_678_2508
    val_B_MondaythroughSaturday_678_2508
    val_C_MondaythroughSunday_678_2508
    val_D_Monday_678_2508
    val_E_Tuesday_678_2508
    val_F_Wednesday_678_2508
    val_G_Thursday_678_2508
    val_H_Friday_678_2508
    val_J_Saturday_678_2508
    val_K_Sunday_678_2508
    val_L_MondaythroughThursday_678_2508
    val_N_AsDirected_678_2508
    val_O_DailyMonthroughFri_678_2508
    val_SA_SundayMondayThursdayFridaySaturday_678_2508
    val_SB_TuesdaythroughSaturday_678_2508
    val_SC_SundayWednesdayThursdayFridaySaturday_678_2508
    val_SD_MondayWednesdayThursdayFridaySaturday_678_2508
    val_SG_TuesdaythroughFriday_678_2508
    val_SL_MondayTuesdayandThursday_678_2508
    val_SP_MondayTuesdayandFriday_678_2508
    val_SX_WednesdayandThursday_678_2508
    val_SY_MondayWednesdayandThursday_678_2508
    val_SZ_TuesdayThursdayandFriday_678_2508
    val_W_WheneverNecessary_678_2508
m08_DeliveryPatternTimeCode = "" rem set a code value
    val_D_AM_679_2540
    val_E_PM_679_2540
    val_F_AsDirected_679_2540

```

**Property Loop2400\_HCP\_00\_LinePricingRepricingInformation**

**Element Members**

```

m01_PricingMethodology = "" rem set a code value

```

```

    val_00_ZeroPricingNotCoveredUnderContract_1473_2545
    val_01_PricedasBilledat100_1473_2545
    val_02_PricedattheStandardFeeSchedule_1473_2545
    val_03_PricedataContractualPercentage_1473_2545
    val_04_BundledPricing_1473_2545
    val_05_PeerReviewPricing_1473_2545
    val_06_PerDiemPricing_1473_2545
    val_07_FlatRatePricing_1473_2545
    val_08_CombinationPricing_1473_2545
    val_09_MaternityPricing_1473_2545
    val_10_OtherPricing_1473_2545
    val_11_LowerofCost_1473_2545
    val_12_RatioofCost_1473_2545
    val_13_CostReimbursed_1473_2545
    val_14_AdjustmentPricing_1473_2545
m02_RepricedAllowedAmount = ""
m03_RepricedSavingAmount = ""
m04_RepricingOrganizationIdentifier = ""
m05_RepricingPerDiemorFlatRateAmount = ""
m06_RepricedApprovedAmbulatoryPatientGroupCode = ""
m07_RepricedApprovedAmbulatoryPatientGroupAmount = ""
m09_ProductorServiceIDQualifier = "" rem set a code value

val_HC_HealthCareFinancingAdministrationCommonProceduralCodingSystemHCPCS_2
35_2568
    val_IV_HomeInfusionEDICoalitionHIECProductServiceCode_235_2568
    val_ZZ_MutuallyDefined_235_2568
m10_ProcedureCode = ""
m11_UnitorBasisforMeasurementCode = "" rem set a code value
    val_DA_Days_355_2573
    val_UN_Unit_355_2573
m12_RepricedApprovedServiceUnitCount = ""
m13_RejectReasonCode = "" rem set a code value

val_T1_CannotIdentifyProviderasTPOThirdPartyOrganizationParticipant_901_2577

val_T2_CannotIdentifyPayerasTPOThirdPartyOrganizationParticipant_901_2577

val_T3_CannotIdentifyInsuredasTPOThirdPartyOrganizationParticipant_901_2577
    val_T4_PayerNameorIdentifierMissing_901_2577
    val_T5_CertificationInformationMissing_901_2577
    val_T6_Claimdoesnotcontainenoughinformationforrepricing_901_2577
m14_PolicyComplianceCode = "" rem set a code value
    val_1_ProcedureFollowedCompliance_1526_2584

val_2_NotFollowedCallNotMadeNonComplianceCallNotMade_1526_2584

val_3_NotMedicallyNecessaryNonComplianceNonMedicallyNecessary_1526_2584
    val_4_NotFollowedOtherNonComplianceOther_1526_2584
    val_5_EmergencyAdmittoNonNetworkHospital_1526_2584
m15_ExceptionCode = "" rem set a code value
    val_1_NonNetworkProfessionalProviderinNetworkHospital_1527_2590
    val_2_EmergencyCare_1527_2590
    val_3_ServicesorSpecialistnotinNetwork_1527_2590
    val_4_OutofServiceArea_1527_2590
    val_5_StateMandates_1527_2590

```

val\_6\_Other\_1527\_2590

**Property Loop2420A\_NM1\_00\_RenderingProviderName**

**Element Members**

m01\_EntityIdentifierCode = "" rem set a code value  
     val\_82\_RenderingProvider\_98\_2598  
 m02\_EntityTypeQualifier = "" rem set a code value  
     val\_1\_Person\_1065\_2600  
     val\_2\_NonPersonEntity\_1065\_2600  
 m03\_RenderingProviderLactorOrganizationName = ""  
 m04\_RenderingProviderFirstName = ""  
 m05\_RenderingProviderMiddleName = ""  
 m07\_RenderingProviderNameSuffix = ""  
 m08\_IdentificationCodeQualifier = "" rem set a code value  
     val\_24\_EmployersIdentificationNumber\_66\_2608  
     val\_34\_SocialSecurityNumber\_66\_2608  
     val\_XX\_HealthCareFinancingAdministrationNationalProvider\_66\_2608  
 m09\_RenderingProviderIdentifier = ""

**Property Loop2420A\_PRV\_00\_RenderingProviderSpecialtyInformation**

**Element Members**

m01\_ProviderCode = "" rem set a code value  
     val\_PE\_Performing\_1221\_2616  
 m02\_ReferenceIdentificationQualifier = "" rem set a code value  
     val\_ZZ\_MutuallyDefined\_128\_2618  
 m03\_ProviderTaxonomyCode = ""

**Property Loop2420A\_N2\_00\_AdditionalRenderingProviderNameInformation**

**Element Members**

m01\_RenderingProviderNameAdditionalText = ""

**Property Loop2420A\_REF\_00\_RenderingProviderSecondaryIdentification**

**Element Members**

m01\_ReferenceIdentificationQualifier = "" rem set a code value  
     val\_0B\_StateLicenseNumber\_128\_2628  
     val\_1B\_BlueShieldProviderNumber\_128\_2628  
     val\_1C\_MedicareProviderNumber\_128\_2628  
     val\_1D\_MedicaidProviderNumber\_128\_2628  
     val\_1G\_ProviderUPINNumber\_128\_2628  
     val\_1H\_CHAMPUSIdentificationNumber\_128\_2628  
     val\_EI\_EmployersIdentificationNumber\_128\_2628  
     val\_G2\_ProviderCommercialNumber\_128\_2628  
     val\_LU\_LocationNumber\_128\_2628  
     val\_N5\_ProviderPlanNetworkIdentificationNumber\_128\_2628  
     val\_SY\_SocialSecurityNumber\_128\_2628  
     val\_X5\_StateIndustrialAccidentProviderNumber\_128\_2628  
 m02\_RenderingProviderSecondaryIdentifier = ""

**Property Loop2420B\_NM1\_00\_PurchasedServiceProviderName****Element Members**

m01\_EntityIdentifierCode = "" rem set a code value  
     val\_QB\_PurchaseServiceProvider\_98\_2645  
 m02\_EntityTypeQualifier = "" rem set a code value  
     val\_1\_Person\_1065\_2647  
     val\_2\_NonPersonEntity\_1065\_2647  
 m08\_IdentificationCodeQualifier = "" rem set a code value  
     val\_24\_EmployersIdentificationNumber\_66\_2655  
     val\_34\_SocialSecurityNumber\_66\_2655  
     val\_XX\_HealthCareFinancingAdministrationNationalProvider\_66\_2655  
 m09\_PurchasedServiceProviderIdentifier = ""

**Property Loop2420B\_REF\_00\_PurchasedServiceProviderSecondaryIdentification****Element Members**

m01\_ReferenceIdentificationQualifier = "" rem set a code value  
     val\_0B\_StateLicenseNumber\_128\_2663  
     val\_1A\_BlueCrossProviderNumber\_128\_2663  
     val\_1B\_BlueShieldProviderNumber\_128\_2663  
     val\_1C\_MedicareProviderNumber\_128\_2663  
     val\_1D\_MedicaidProviderNumber\_128\_2663  
     val\_1G\_ProviderUPINNumber\_128\_2663  
     val\_1H\_CHAMPUSIdentificationNumber\_128\_2663  
     val\_EI\_EmployersIdentificationNumber\_128\_2663  
     val\_G2\_ProviderCommercialNumber\_128\_2663  
     val\_LU\_LocationNumber\_128\_2663  
     val\_N5\_ProviderPlanNetworkIdentificationNumber\_128\_2663  
     val\_SY\_SocialSecurityNumber\_128\_2663  
     val\_U3\_UniqueSupplierIdentificationNumberUSIN\_128\_2663  
     val\_X5\_StateIndustrialAccidentProviderNumber\_128\_2663  
 m02\_PurchasedServiceProviderSecondaryIdentifier = ""

**Property Loop2420C\_NM1\_00\_ServiceFacilityLocation****Element Members**

m01\_EntityIdentifierCode = "" rem set a code value  
     val\_77\_ServiceLocation\_98\_2682  
     val\_FA\_Facility\_98\_2682  
     val\_LI\_IndependentLab\_98\_2682  
     val\_TL\_TestingLaboratory\_98\_2682  
 m02\_EntityTypeQualifier = "" rem set a code value  
     val\_2\_NonPersonEntity\_1065\_2687  
 m03\_LaboratoryorFacilityName = ""  
 m08\_IdentificationCodeQualifier = "" rem set a code value  
     val\_24\_EmployersIdentificationNumber\_66\_2694  
     val\_34\_SocialSecurityNumber\_66\_2694  
     val\_XX\_HealthCareFinancingAdministrationNationalProvider\_66\_2694  
 m09\_LaboratoryorFacilityPrimaryIdentifier = ""

**Property Loop2420C\_N2\_00\_AdditionalServiceFacilityLocationNameInformation**

**Element Members**

m01\_LaboratoryorFacilityNameAdditionalText = ""

**Property Loop2420C\_N3\_00\_ServiceFacilityLocationAddress****Element Members**

m01\_LaboratoryorFacilityAddressLine = ""

m02\_LaboratoryorFacilityAddressLine = ""

**Property Loop2420C\_N4\_00\_ServiceFacilityLocationCityStateZIP****Element Members**

m01\_LaboratoryorFacilityCityName = ""

m02\_LaboratoryorFacilityStateorProvinceCode = ""

m03\_LaboratoryorFacilityPostalZoneorZIPCode = ""

m04\_CountryCode = ""

**Property Loop2420C\_REF\_00\_ServiceFacilityLocationSecondaryIdentification****Element Members**

m01\_ReferenceIdentificationQualifier = "" rem set a code value

val\_0B\_StateLicenseNumber\_128\_2715

val\_1A\_BlueCrossProviderNumber\_128\_2715

val\_1B\_BlueShieldProviderNumber\_128\_2715

val\_1C\_MedicareProviderNumber\_128\_2715

val\_1D\_MedicaidProviderNumber\_128\_2715

val\_1G\_ProviderUPINNumber\_128\_2715

val\_1H\_CHAMPUSIdentificationNumber\_128\_2715

val\_G2\_ProviderCommercialNumber\_128\_2715

val\_LU\_LocationNumber\_128\_2715

val\_N5\_ProviderPlanNetworkIdentificationNumber\_128\_2715

val\_TJ\_FederalTaxpayersIdentificationNumber\_128\_2715

val\_X4\_ClinicalLaboratoryImprovementAmendmentNumber\_128\_2715

val\_X5\_StateIndustrialAccidentProviderNumber\_128\_2715

m02\_ServiceFacilityLocationSecondaryIdentifier = ""

**Property Loop2420D\_NM1\_00\_SupervisingProviderName****Element Members**

m01\_EntityIdentifierCode = "" rem set a code value

val\_DQ\_SupervisingPhysician\_98\_2733

m02\_EntityTypeQualifier = "" rem set a code value

val\_1\_Person\_1065\_2735

m03\_SupervisingProviderLastName = ""

m04\_SupervisingProviderFirstName = ""

m05\_SupervisingProviderMiddleName = ""

m07\_SupervisingProviderNameSuffix = ""

m08\_IdentificationCodeQualifier = "" rem set a code value

val\_24\_EmployersIdentificationNumber\_66\_2742

val\_34\_SocialSecurityNumber\_66\_2742

val\_XX\_HealthCareFinancingAdministrationNationalProvider\_66\_2742

m09\_SupervisingProviderIdentifier = ""

**Property Loop2420D\_N2\_00\_AdditionalSupervisingProviderNameInformation**

**Element Members**

m01\_SupervisingProviderNameAdditionalText = ""

**Property Loop2420D\_REF\_00\_SupervisingProviderSecondaryIdentification**

**Element Members**

m01\_ReferenceIdentificationQualifier = "" rem set a code value  
 val\_0B\_StateLicenseNumber\_128\_2753  
 val\_1B\_BlueShieldProviderNumber\_128\_2753  
 val\_1C\_MedicareProviderNumber\_128\_2753  
 val\_1D\_MedicaidProviderNumber\_128\_2753  
 val\_1G\_ProviderUPINNumber\_128\_2753  
 val\_1H\_CHAMPUSIdentificationNumber\_128\_2753  
 val\_EI\_EmployersIdentificationNumber\_128\_2753  
 val\_G2\_ProviderCommercialNumber\_128\_2753  
 val\_LU\_LocationNumber\_128\_2753  
 val\_N5\_ProviderPlanNetworkIdentificationNumber\_128\_2753  
 val\_SY\_SocialSecurityNumber\_128\_2753  
 val\_X5\_StateIndustrialAccidentProviderNumber\_128\_2753  
 m02\_SupervisingProviderSecondaryIdentifier = ""

**Property Loop2420E\_NM1\_00\_OrderingProviderName**

**Element Members**

m01\_EntityIdentifierCode = "" rem set a code value  
 val\_DK\_OrderingPhysician\_98\_2770  
 m02\_EntityTypeQualifier = "" rem set a code value  
 val\_1\_Person\_1065\_2772  
 m03\_OrderingProviderLastName = ""  
 m04\_OrderingProviderFirstName = ""  
 m05\_OrderingProviderMiddleName = ""  
 m07\_OrderingProviderNameSuffix = ""  
 m08\_IdentificationCodeQualifier = "" rem set a code value  
 val\_24\_EmployersIdentificationNumber\_66\_2779  
 val\_34\_SocialSecurityNumber\_66\_2779  
 val\_XX\_HealthCareFinancingAdministrationNationalProvider\_66\_2779  
 m09\_OrderingProviderIdentifier = ""

**Property Loop2420E\_N2\_00\_AdditionalOrderingProviderNameInformation**

**Element Members**

m01\_OrderingProviderNameAdditionalText = ""

**Property Loop2420E\_N3\_00\_OrderingProviderAddress**

**Element Members**

m01\_OrderingProviderAddressLine = ""

m02\_OrderingProviderAddressLine = ""

**Property Loop2420E\_N4\_00\_OrderingProviderCityStateZIPCode**

**Element Members**

m01\_OrderingProviderCityName = ""  
 m02\_OrderingProviderStateCode = ""  
 m03\_OrderingProviderPostalZoneorZIPCode = ""  
 m04\_CountryCode = ""

**Property Loop2420E\_REF\_00\_OrderingProviderSecondaryIdentification**

**Element Members**

m01\_ReferenceIdentificationQualifier = "" rem set a code value  
 val\_0B\_StateLicenseNumber\_128\_2800  
 val\_1B\_BlueShieldProviderNumber\_128\_2800  
 val\_1C\_MedicareProviderNumber\_128\_2800  
 val\_1D\_MedicaidProviderNumber\_128\_2800  
 val\_1G\_ProviderUPINNumber\_128\_2800  
 val\_1H\_CHAMPUSIdentificationNumber\_128\_2800  
 val\_EI\_EmployersIdentificationNumber\_128\_2800  
 val\_G2\_ProviderCommercialNumber\_128\_2800  
 val\_LU\_LocationNumber\_128\_2800  
 val\_N5\_ProviderPlanNetworkIdentificationNumber\_128\_2800  
 val\_SY\_SocialSecurityNumber\_128\_2800  
 val\_X5\_StateIndustrialAccidentProviderNumber\_128\_2800  
 m02\_OrderingProviderSecondaryIdentifier = ""

**Property Loop2420E\_PER\_00\_OrderingProviderContactInformation**

**Element Members**

m01\_ContactFunctionCode = "" rem set a code value  
 val\_IC\_InformationContact\_366\_2817  
 m02\_OrderingProviderContactName = ""  
 m03\_CommunicationNumberQualifier = "" rem set a code value  
 val\_EM\_ElectronicMail\_365\_2820  
 val\_FX\_Facsimile\_365\_2820  
 val\_TE\_Telephone\_365\_2820  
 m04\_CommunicationNumber = ""  
 m05\_CommunicationNumberQualifier = "" rem set a code value  
 val\_EM\_ElectronicMail\_365\_2825  
 val\_EX\_TelephoneExtension\_365\_2825  
 val\_FX\_Facsimile\_365\_2825  
 val\_TE\_Telephone\_365\_2825  
 m06\_CommunicationNumber = ""  
 m07\_CommunicationNumberQualifier = "" rem set a code value  
 val\_EM\_ElectronicMail\_365\_2831  
 val\_EX\_TelephoneExtension\_365\_2831  
 val\_FX\_Facsimile\_365\_2831  
 val\_TE\_Telephone\_365\_2831  
 m08\_CommunicationNumber = ""

**Property Loop2420F\_NM1\_00\_ReferringProviderName****Element Members**

m01\_EntityIdentifierCode = "" rem set a code value  
     val\_DN\_ReferringProvider\_98\_2839  
     val\_P3\_PrimaryCareProvider\_98\_2839  
 m02\_EntityTypeQualifier = "" rem set a code value  
     val\_1\_Person\_1065\_2842  
 m03\_ReferringProviderLastName = ""  
 m04\_ReferringProviderFirstName = ""  
 m05\_ReferringProviderMiddleName = ""  
 m07\_ReferringProviderNameSuffix = ""  
 m08\_IdentificationCodeQualifier = "" rem set a code value  
     val\_24\_EmployersIdentificationNumber\_66\_2849  
     val\_34\_SocialSecurityNumber\_66\_2849  
     val\_XX\_HealthCareFinancingAdministrationNationalProvider\_66\_2849  
 m09\_ReferringProviderIdentifier = ""

**Property Loop2420F\_PRV\_00\_ReferringProviderSpecialtyInformation****Element Members**

m01\_ProviderCode = "" rem set a code value  
     val\_RF\_Referring\_1221\_2857  
 m02\_ReferenceIdentificationQualifier = "" rem set a code value  
     val\_ZZ\_MutuallyDefined\_128\_2859  
 m03\_ProviderTaxonomyCode = ""

**Property Loop2420F\_N2\_00\_AdditionalReferringProviderNameInformation****Element Members**

m01\_ReferringProviderNameAdditionalText = ""

**Property Loop2420F\_REF\_00\_ReferringProviderSecondaryIdentification****Element Members**

m01\_ReferenceIdentificationQualifier = "" rem set a code value  
     val\_0B\_StateLicenseNumber\_128\_2869  
     val\_1B\_BlueShieldProviderNumber\_128\_2869  
     val\_1C\_MedicareProviderNumber\_128\_2869  
     val\_1D\_MedicaidProviderNumber\_128\_2869  
     val\_1G\_ProviderUPINNumber\_128\_2869  
     val\_1H\_CHAMPUSIdentificationNumber\_128\_2869  
     val\_EI\_EmployersIdentificationNumber\_128\_2869  
     val\_G2\_ProviderCommercialNumber\_128\_2869  
     val\_LU\_LocationNumber\_128\_2869  
     val\_N5\_ProviderPlanNetworkIdentificationNumber\_128\_2869  
     val\_SY\_SocialSecurityNumber\_128\_2869  
     val\_X5\_StateIndustrialAccidentProviderNumber\_128\_2869  
 m02\_ReferringProviderSecondaryIdentifier = ""

**Property Loop2420G\_NM1\_00\_OtherPayerPriorAuthorizationorReferralNumber**

**Element Members**

m01\_EntityIdentifierCode = "" rem set a code value  
     val\_PR\_Payer\_98\_2886  
 m02\_EntityTypeQualifier = "" rem set a code value  
     val\_2\_NonPersonEntity\_1065\_2888  
 m03\_PayerName = ""  
 m08\_IdentificationCodeQualifier = "" rem set a code value  
     val\_PI\_PayorIdentification\_66\_2895  
  
 val\_XV\_HealthCareFinancingAdministrationNationalPlanIDBIRequiredifthe\_66\_2895  
 m09\_OtherPayerIdentificationNumber = ""

**Property Loop2420G\_REF\_00\_OtherPayerPriorAuthorizationorReferralNumber****Element Members**

m01\_ReferenceIdentificationQualifier = "" rem set a code value  
     val\_9F\_ReferralNumber\_128\_2902  
     val\_G1\_PriorAuthorizationNumber\_128\_2902  
 m02\_OtherPayerPriorAuthorizationorReferralNumber = ""

**Property Loop2430\_SVD\_00\_LineAdjudicationInformation****Element Members**

m01\_OtherPayerPrimaryIdentifier = ""  
 m02\_ServiceLinePaidAmount = ""  
 m0301\_ProductorServiceIDQualifier = "" rem set a code value  
  
 val\_HC\_HealthCareFinancingAdministrationCommonProceduralCodingSystemHCPCS\_2  
 35\_2912  
     val\_IV\_HomeInfusionEDICoalitionHIECProductServiceCode\_235\_2912  
     val\_N1\_NationalDrugCodein442Format\_235\_2912  
     val\_N2\_NationalDrugCodein532Format\_235\_2912  
     val\_N3\_NationalDrugCodein541Format\_235\_2912  
     val\_N4\_NationalDrugCodein542Format\_235\_2912  
     val\_ZZ\_MutuallyDefined\_235\_2912  
 m0302\_ProcedureCode = ""  
 m0303\_ProcedureModifier = ""  
 m0304\_ProcedureModifier = ""  
 m0305\_ProcedureModifier = ""  
 m0306\_ProcedureModifier = ""  
 m0307\_ProcedureCodeDescription = ""  
 m05\_PaidServiceUnitCount = ""  
 m06\_BundledorUnbundledLineNumber = ""

**Property Loop2430\_CAS\_00\_LineAdjustment****Element Members**

m01\_ClaimAdjustmentGroupCode = "" rem set a code value  
     val\_CO\_ContractualObligations\_1033\_2930  
     val\_CR\_CorrectionandReversals\_1033\_2930  
     val\_OA\_Otheradjustments\_1033\_2930  
     val\_PI\_PayorInitiatedReductions\_1033\_2930  
     val\_PR\_PatientResponsibility\_1033\_2930

m02\_AdjustmentReasonCode = ""  
 m03\_AdjustmentAmount = ""  
 m04\_AdjustmentQuantity = ""  
 m05\_AdjustmentReasonCode = ""  
 m06\_AdjustmentAmount = ""  
 m07\_AdjustmentQuantity = ""  
 m08\_AdjustmentReasonCode = ""  
 m09\_AdjustmentAmount = ""  
 m10\_AdjustmentQuantity = ""  
 m11\_AdjustmentReasonCode = ""  
 m12\_AdjustmentAmount = ""  
 m13\_AdjustmentQuantity = ""  
 m14\_AdjustmentReasonCode = ""  
 m15\_AdjustmentAmount = ""  
 m16\_AdjustmentQuantity = ""  
 m17\_AdjustmentReasonCode = ""  
 m18\_AdjustmentAmount = ""  
 m19\_AdjustmentQuantity = ""

**Property Loop2430\_DTP\_00\_LineAdjudicationDate**

**Element Members**

m01\_DateTimeQualifier = "" rem set a code value  
     val\_573\_DateClaimPaid\_374\_2955  
 m02\_DateTimePeriodFormatQualifier = "" rem set a code value  
     val\_D8\_DateExpressedinFormatCCYYMMDD\_1250\_2957  
 m03\_AdjudicationorPaymentDate = ""

**Property Loop2440\_LQ\_00\_FormIdentificationCode**

**Element Members**

m01\_CodeListQualifierCode = "" rem set a code value  
     val\_AS\_FormTypeCode\_1270\_2961  
  
 val\_UT\_HealthCareFinancingAdministrationHCFADurableMedicalEquipment\_1270\_2961  
 m02\_FormIdentifier = ""

**Property Loop2440\_FRM\_00\_SupportingDocumentation**

**Element Members**

m01\_QuestionNumberLetter = ""  
 m02\_QuestionResponse = "" rem set a code value  
     val\_N\_No\_1073\_2967  
     val\_W\_NotApplicable\_1073\_2967  
     val\_Y\_Yes\_1073\_2967  
 m03\_QuestionResponse = ""  
 m04\_QuestionResponse = ""  
 m05\_QuestionResponse = ""

**Property Loop2440\_SE\_00\_TransactionSetTrailer**

**Element Members**    m01\_TransactionSegmentCount = ""